

LINDSAY PARCEL MANAGEMENT PLAN



March 2014



1. INTRODUCTION

In 2012, Pitkin County Open Space and Trails (OST) and the City of Aspen (COA) partnered to purchase the Lindsay Parcel. The Lindsay Parcel encompasses approximately seven acres located on the northwest side of Smuggler Mountain and lies within the Hunter Creek Valley. This parcel is surrounded by two hundred plus acres of existing open space. (*Figure 1*)

The City and County Open Space and Trails Boards identified the parcel as a priority for acquisition because:

1. The property was one of two remaining parcels located in the middle of an assemblage of City and County Open Space Properties already acquired for open space.
2. The acquisition increases the ecological values of the surrounding open spaces by preventing development and the bifurcation of habitat.
3. The acquisition will provide opportunities for future recreation.
4. The acquisition protects the uninterrupted view corridor into the Hunter Creek Valley.

The City of Aspen and Pitkin County Open Space and Trails Programs share a long and successful relationship preserving and managing lands in this area and will share responsibilities for management on this parcel. Because the parcel is adjacent to the Smuggler Mountain Open Space Management Area, this management plan will be amended into the existing Smuggler Mountain Open Space Management Plan. The Lindsay Parcel Management Plan represents an overview of current conditions contained within the parcel and recommended management actions. Staff from both jurisdictions will work collaboratively with the community, and adjacent land owners to implement action items provided in this plan.

Like all open space management plans created by Pitkin County Open Space and Trails and the City of Aspen, adaptive management will be employed and the plan is always open for amendment through approval of the City of Aspen and Pitkin County Open Space and Trails Boards.

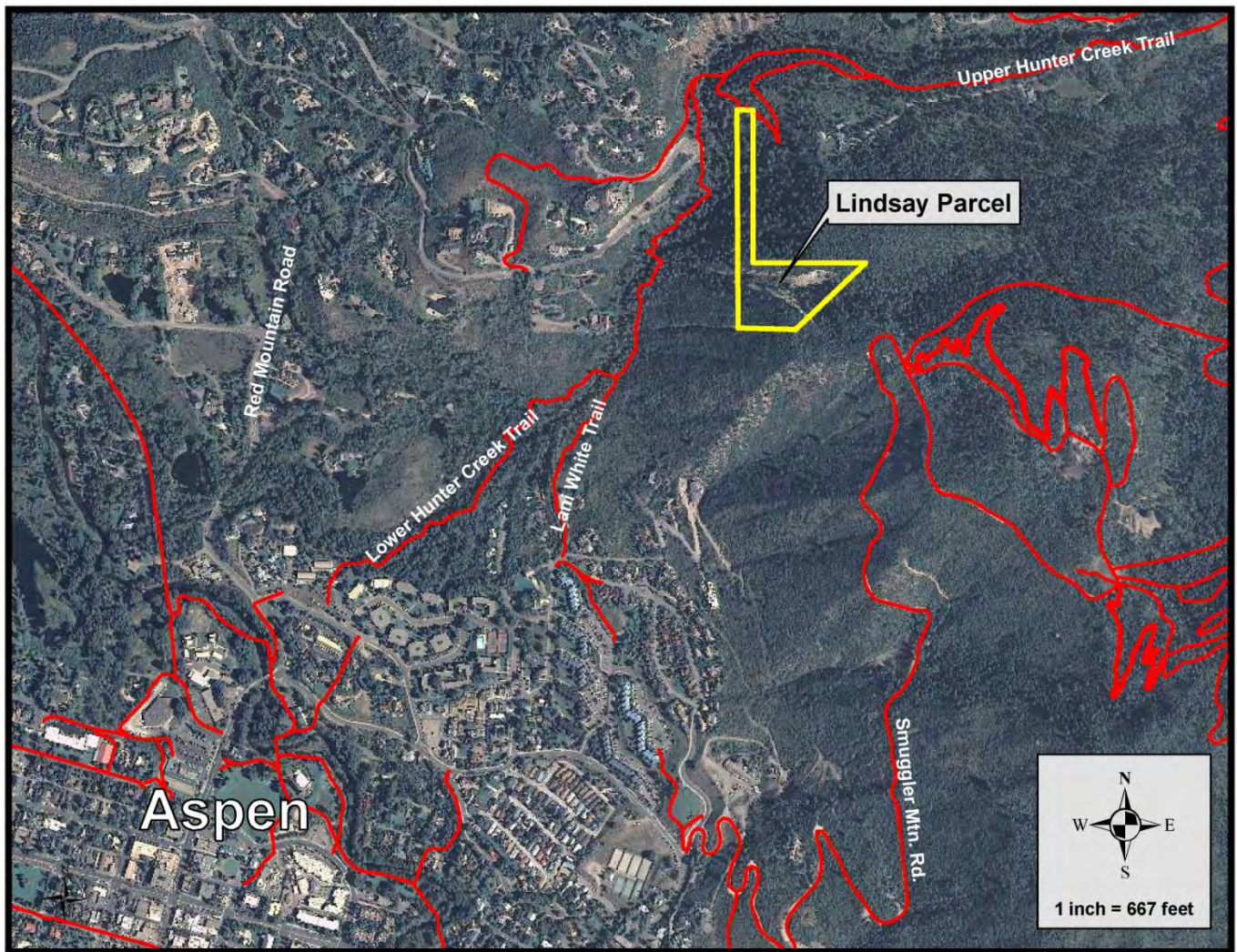


Figure 1, Parcel Location

2. PLANNING PROCESS

City of Aspen staff implemented a three step process in the planning of the Lindsay Parcel Management Plan. These steps are as follows:

1. Public Scoping. The City of Aspen and Pitkin County Open Space and Trails staff held one public meeting on June 10, 2013 and collected public comment through a web based survey which ran for 42 days from May 20, 2013 – June 30, 2013. Public outreach successfully contacted 147 people and generated a significant amount of comment.

2. Specialist Review. An on-site meeting and property visit took place on May 20, 2013 between staff and Jonathon Lowsky with Colorado Wildlife Science. This meeting, which provided input on wildlife habitat values and the effects of recreation on wildlife, resulted in a wildlife study which is attached as **Exhibit A**. The Pitkin County Open Space and Trails staff and City of Aspen Parks and Open Space staff also extensively studied the existing vegetation and provided input on the ecological values of the property.

3. Open Space Board Input and Review. Once the public scoping and expert analysis were completed, the Lindsay Parcel Management Plan then went through a thorough review process by both the City of Aspen and Pitkin County Open Space and Trails Boards. Each Board member was given an opportunity to provide feedback on the Plan and then voted to either accept or deny the Plan as proposed. Each of these Boards voted to accept the Plan as presented.

3. MANAGEMENT PLAN GOALS

Through the planning and review process the following goals of the Plan were identified by staff, as well as both Open Space and Trails Boards.

- To identify critical wildlife or vegetation resources.
- To identify recreational opportunities.
- To manage the property cohesively with the existing Smuggler Mountain Open Space Management Plan.

4. PLANNING AREA

The seven acre parcel is an "L" shaped parcel with a long, narrow panhandle on the north end and a trapezoidal shape at the south end. Hunter Creek itself meanders north to south along the western boundary of the Property. A deep draw or "gorge" opens up at the southeast side end of the trapezoid. This draw is approximately 320 feet across at its widest point (east end) and narrows to approximately 131 feet across at the western boundary and occupies approximately 2.5 acres. (*Figure 2*) The parcel sits on the flanks of Smuggler Mountain and just below the upper Hunter Creek Valley. The nature of the topography is quite steep and limits potential access to, and use of, the property. (*Figure 3,*)

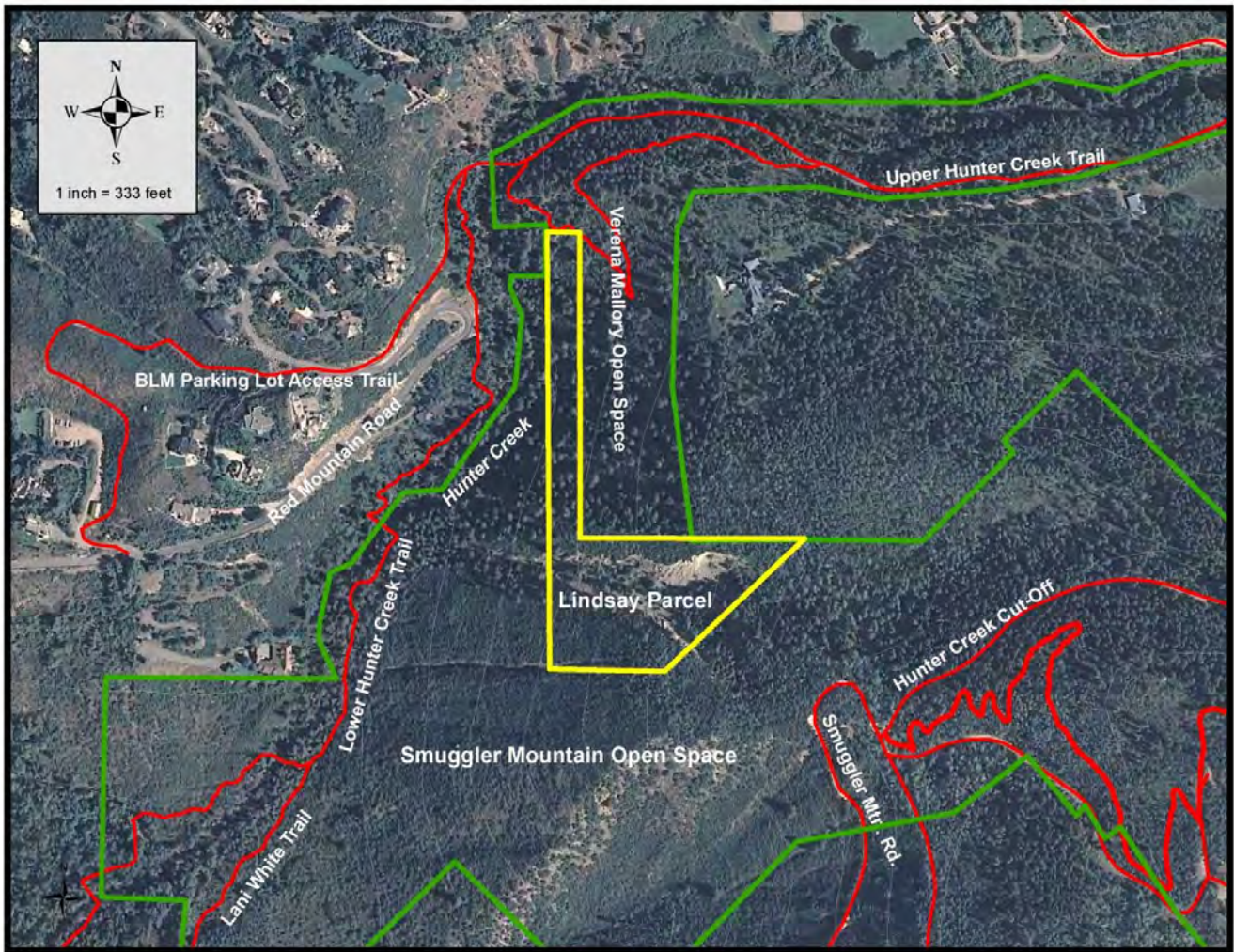


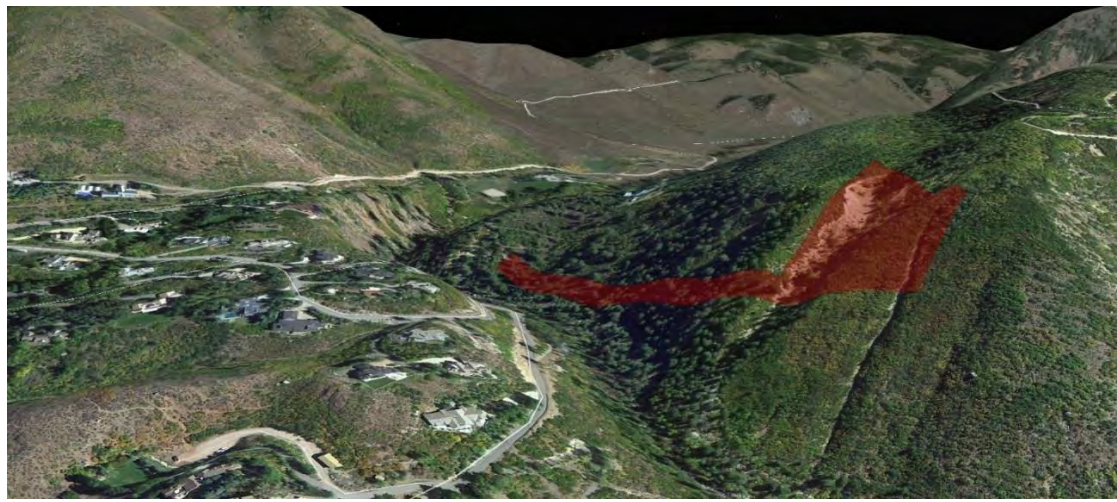
Figure 2, Planning Area



View from the West



View from the Northwest



View from the West

Figure 3, Lindsay Parcel Aerial Perspectives

5. RECREATION

Based upon site analysis, recreational opportunities were identified within the following framework. As an individual parcel the property offers very little for developed recreation. The “gorge” area and steeper slopes provide for wildlife habitat and create a challenge for most recreational development. When the parcel is combined with surrounding existing open space the potential for multi-use recreational trail development is significant. Based on the recommendations of the wildlife study, recreation should be limited to areas identified as low wildlife critical zones. Those zones are identified as a “Potential Recreation Area.” (Figure 4)



Figure 4, Recreation Map

Through the public scoping process, a clear desire was expressed to utilize the Lindsay Parcel for the development of a multi-use, recreational trail that would create an alternate access to the Hunter Creek Valley. Currently, trail users have two options. The Hunter Creek Trail provides trail access along the creek but is limited to foot traffic due to its extremely rocky and difficult nature. The other option is the Smuggler Mountain Road, which is a Pitkin County maintained dirt road that has sustained steep and rocky grades, and is open to motor vehicles. Neither of these two options provides for good, family friendly hiking or mountain biking access to the extensive trail networks within the Hunter Creek/Smuggler Mountain areas. Staff received multiple comments which indicated that any trail development through the “Recreation Area” should be designed as a bike friendly, multi-use trail that would accommodate multiple skill levels and users. Any potential trail should be developed in a manner that takes into careful consideration the impacts on wildlife and vegetation while still addressing the public’s desire for a new trail into the Hunter Creek Valley.

The public scoping process indicated that it was important to provide a safer and easier route into, and out of, the Hunter Creek Valley. It is also staff's opinion that this trail should not exceed an "intermediate" level of difficulty for hikers or mountain bikers. In order to create this type of trail connection into the Hunter Creek Valley, it would most likely need to utilize existing trails through the Verena Mallory Open Space which is owned and managed by the Aspen Valley Land Trust. The governing documents of this property indicate that additional trail development on the parcel could be challenging. Therefore, a new trail through the Lindsay Parcel may need to connect to the existing Verena Mallory Trail which does bisect the northeast corner of the Lindsay Parcel. (Figure 5) Any decisions to move forward with this proposed trail connection will be done so by working carefully with the Aspen Valley Land Trust to thoroughly understand the opportunities and constraints of any potential trail alignments.

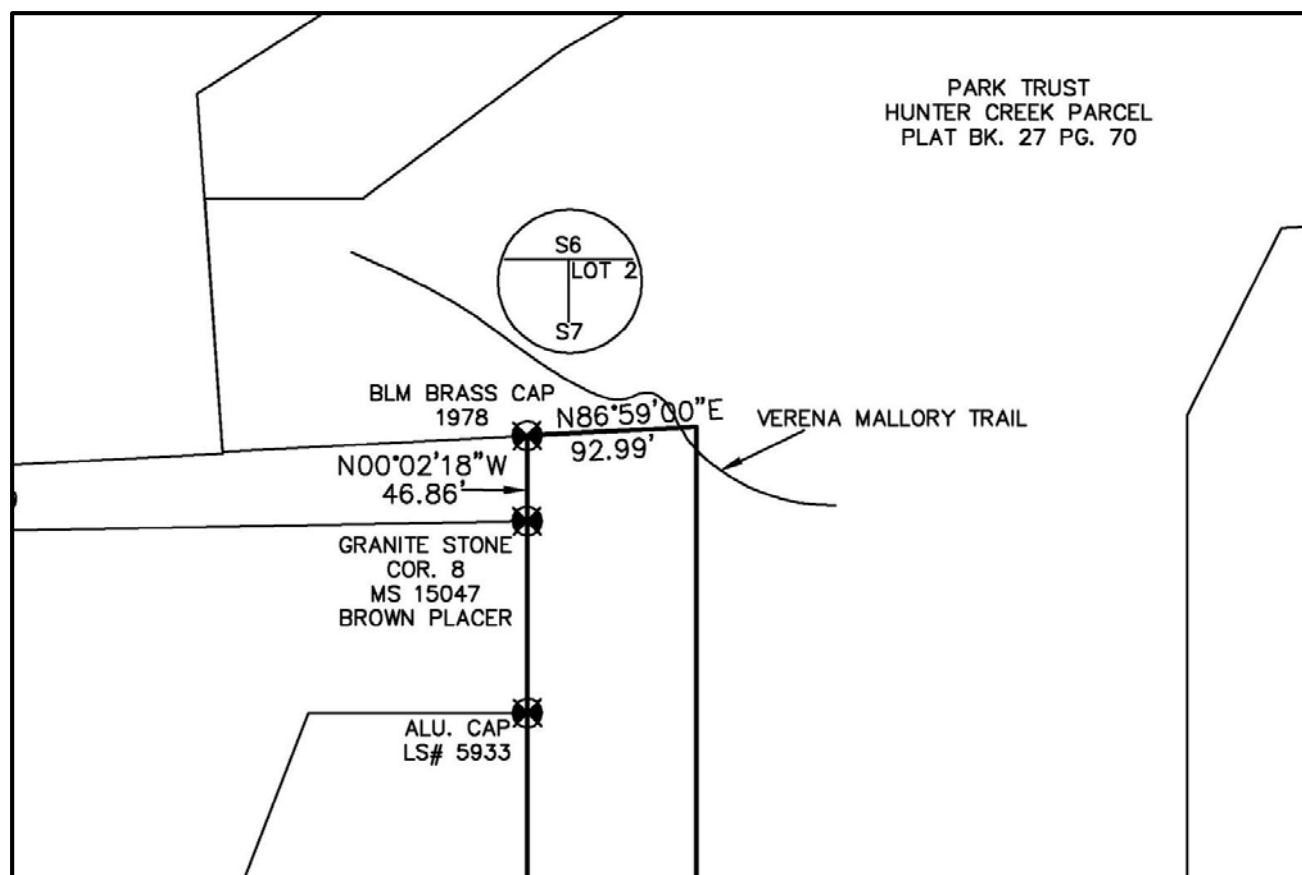


Figure 5, Lindsay Parcel Survey

Parking/Trailheads

There would be two access points or trailheads that provide access to the Lindsay Parcel. The existing Lani White Trailhead will be the main trailhead to access the property for all mountain bikers and any pedestrians from the east side of Aspen. Parking is non-existent at the Lani White Trailhead, but visitors could park at the Smuggler Mountain Road parking area and access the Lani White Trail through the Centennial Development, represented in blue below. (Figure 6) Otherwise access to the Lani White Trailhead will be by foot or bicycle using existing trails and roads. Many hikers and

runners could still choose to access the property via the existing Hunter Creek Trail, which provides direct access to the Rio Grande Trail and Lone Pine Avenue.

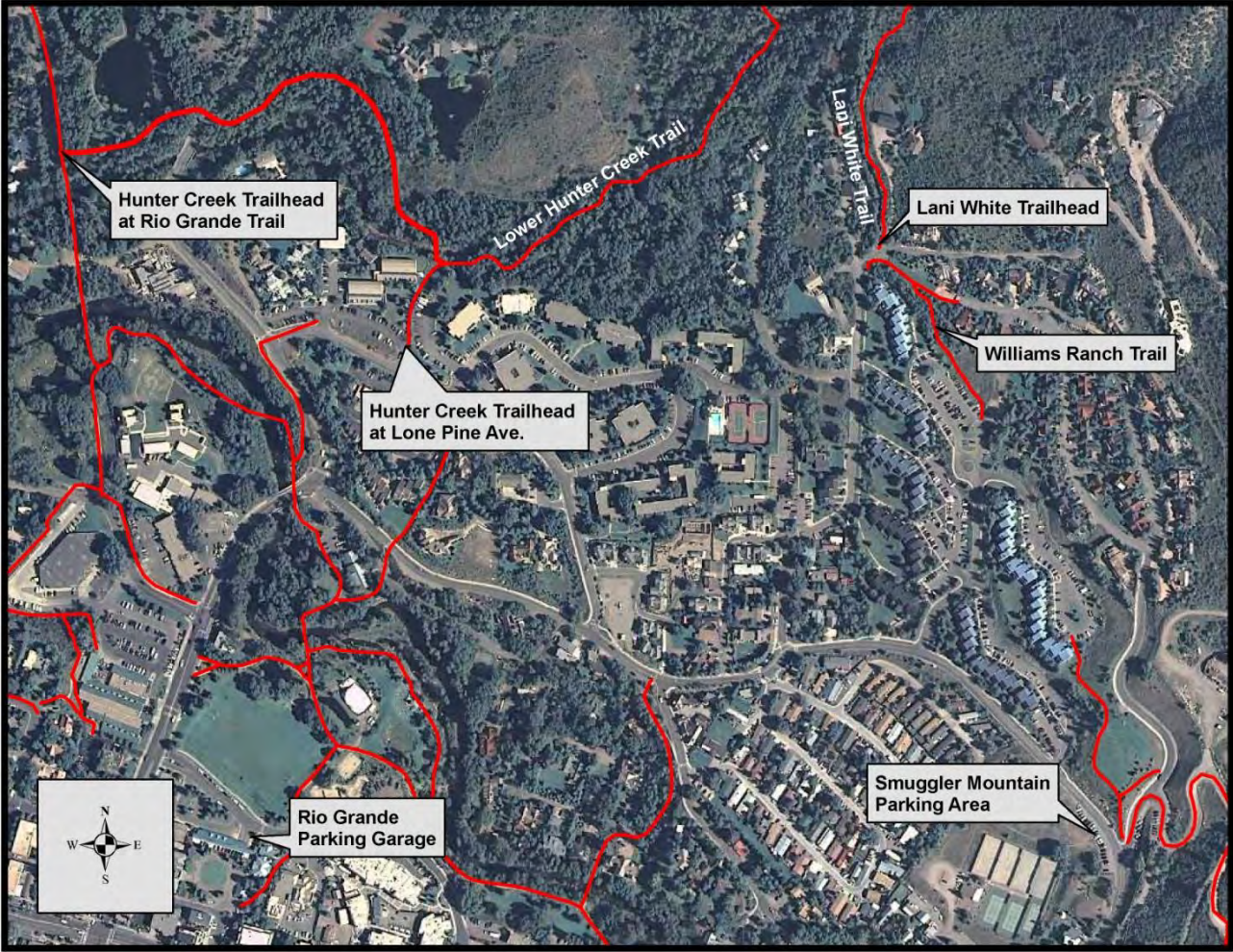


Figure 6, Trailheads and Parking

6. WILDLIFE AND VEGETATION

Vegetation

The property is characterized by three types of vegetative communities; mixed conifer forest (*green on map*), mixed montane shrubland (*yellow on map*), and riparian woodland (*purple on map*). (Figure 7) The vegetation types found on the parcel are characteristic of the zones typical to other parcels located on Smuggler Mountain and areas surrounding Aspen.

Douglas fir dominates the mixed conifer with spruce, subalpine fir, lodgepole pine, and sporadic quaking aspen occurring as well. Due to a lack of sunlight the forest floor lacks vegetation but sporadic growth of arnica grouse whortleberry, Parry’s lousewort, and mountain lover are well established in the understory of this stand.

The mixed montane shrubland is dominated by Gambel oak. Other co-dominant or sub-dominant shrubs present include chokecherry, snowberry, serviceberry, mountain big sagebrush, rabbitbrush, and Woods rose. Grasses common to these slopes and aspects of the property include bluebunch wheatgrass, elk sedge, Kentucky bluegrass, slender wheatgrass, smooth brome, nodding brome, mountain brome, and Letterman needle grass. Some of the more common flowering plants include American vetch, northern bedstraw, aspen peavine, yarrow, Oregon fleabane, and Fendler meadow rue.

Bare soils and scree dominate the “gorge” with young narrowleaf cottonwoods growing in the bottom where eroding soils and moisture accumulates. Shrubs, forbs and grasses are sparse to absent.

In addition, a small portion of the panhandle is occupied by the riparian woodland that parallels Hunter Creek. No threatened and endangered species were identified at the time of the site visits.

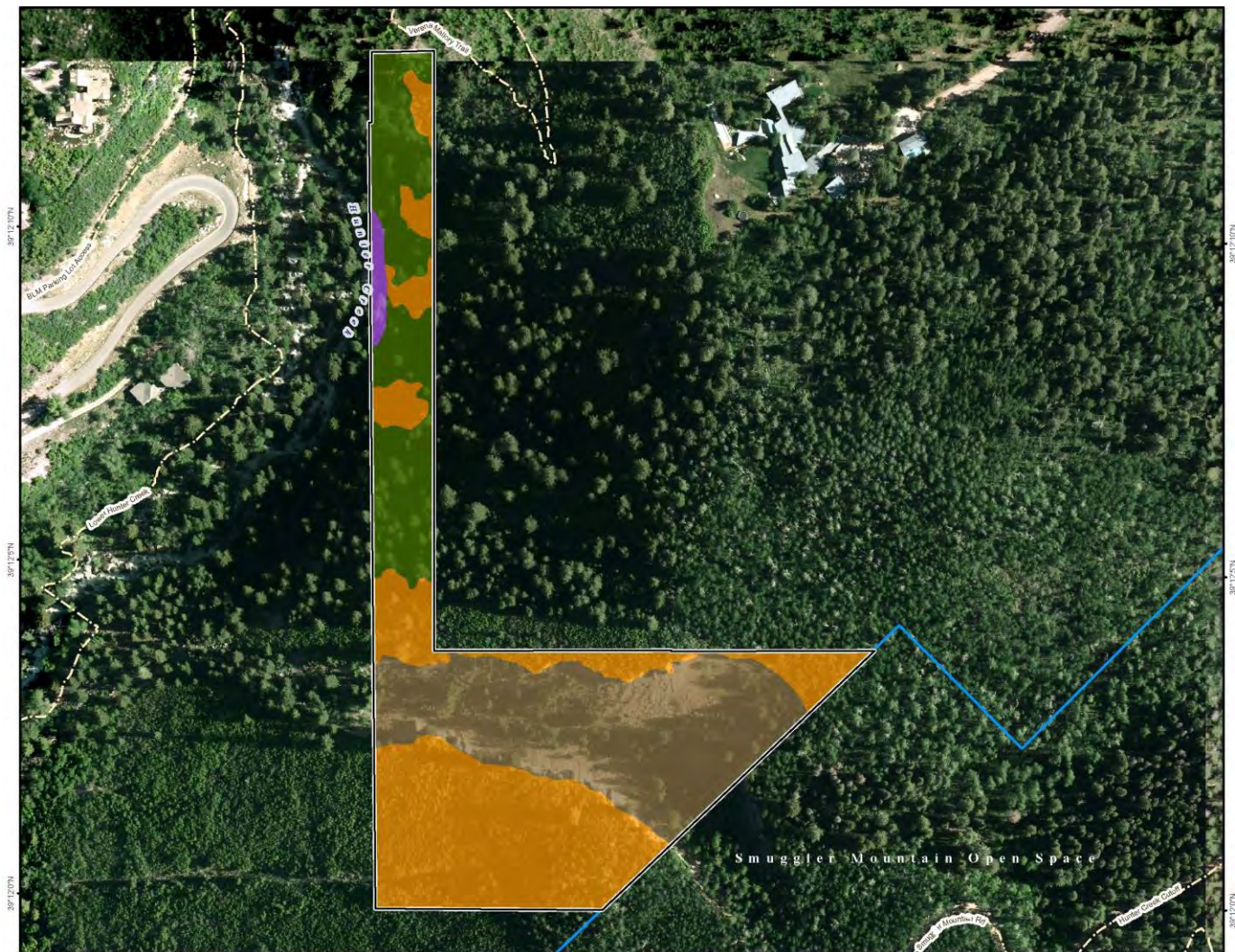


Figure 7, Vegetation Types

Wildlife

The location of the parcel along Hunter Creek and the variety of forest communities provides habitat for an array of wildlife for a property of this size. The diversity of habitats provides an abundance of food, cover, and reproduction sites. Wildlife associated with the property is typical of central Colorado montane communities. During portions of their life cycle these species rely on forest, woodland, and shrubland habitat present on the property. The Hunter Creek riparian area provides essential wildlife habitat.

The Property's wildlife can be broadly grouped as large mammals, predators, small mammals, birds, and herpetofauna. Species of wildlife that may be anticipated to utilize habitats on the property are described in greater detail in the wildlife study.

No threatened and endangered species were identified at the time of the site visits.

Staff consulted with Colorado Wildlife Science on the wildlife use of the property and adjacent lands. The Lindsay Parcel contains limited wildlife habitat but it is adjacent to and provides access to thousands of acres of critical winter habitat for mule deer and elk. Staff will work with the wildlife consultant to manage trail development and to further study wildlife.

7. PUBLIC COMMENT

The City of Aspen and Pitkin County Open Space and Trails Staff held one public meeting on June 10, 2013 and collected public comment through a web based survey which ran for 42 days from May 20, 2013 – June 30, 2013.

The first round of public outreach involved using a public survey to contact 147 people and generated significant amount of comment. A copy of the public survey is attached. (**Exhibit B**) Overall the public supported the acquisition and the goals of the acquisition.

The online public survey closed with a total of 144 responses of which 47% live in Aspen and 23% live in Pitkin County. 93% of the respondents mountain bike on Open Space with 86% of the respondents walk/hike on Open Space. 100% of the respondents currently recreate on Smuggler and many of those, 67%, Mountain Bike on Smuggler.

The public survey asked specifically what uses the respondent would you like to see on the property. 136 respondents requested a trail improvement for mountain biking, hiking or similar uses connecting to existing open space and 8 respondents requested preservation, seasonal closures and protection of habitat.

The public survey included the question, "A potential trail connection between the Hunter Creek/Verena Mallory Trails and the Lani White Trail has been proposed. Do you feel this connection should be made and for what types of non-motorized uses?" 138 of the respondents requested a new trail and 6 requested that a trail not be built in order to protect the property for habitat.

Open ended comments as to why a new trail is supported;

1. "A new trail provides a safer connection than biking Red Mountain Road"
2. "A new trail will decrease the pressure on Smuggler Road"
3. "A new trail can provide access for multiple skill levels"
4. "A new trail can provide separation of uses, bikers cannot ride the Hunter Creek Trail thus making it a "hike only" experience. A new trail could provide a new mixed use, bike friendly trail into Hunter Creek Valley."

Another part of the public process included reaching out to adjacent properties. The Lindsay parcel is surrounded by public lands except at the top of the panhandle where it shares a property line with Aspen Valley Land Trust's (AVLT) Hammerhead Parcel. This 10 acre parcel was acquired through two separate deeds in 1991 and 1992. A third deed was granted in 1994 establishing the Park Trust. Staff will work closely with the AVLT as it moves forward with any recreational trail opportunities on the Lindsay Parcel.

Staff received public comment from the Estamar Trust which owns a tract of private land located to the north of the Lindsay Parcel. Comments focused on;

1. Wildlife benefits, limiting trail development for the benefit of supporting undisturbed areas within an already heavily used area,
2. Possible issues with erosion from a new trail developed on steep slopes, and
3. Increase in wildfire danger with the introduction of people within that area – 90% of wildfires are human caused, increasing the number of people into this undisturbed area increases this danger.

The second round of public outreach contacted 29 people and generated some additional comment. A copy of the public comments is attached. (*Exhibit C*) The comment period ran for two weeks from October 21st through November 4, 201. Overall, the majority of those surveyed indicated support for the development of a trail connection.

The online survey closed with a total of 29 responses of which 26 supported a new trail to access Hunter Creek many citing the new trail as an improvement to safety by providing an alternative route down other than Red Mountain Road. Two of the respondents asked that the parcel not be developed and kept for wildlife and scenic purposes. One cited that there are plenty of options for bikers and hikers and an alternative trail would be better if built near smuggler road, keeping the impacts in one area. One was undecided.

Based on both rounds of public comment, there appears to be significant public support for the development of a new trail that provides access to the Hunter Creek Valley through the Lindsay Parcel. If a new trail is constructed it should provide access for multiple users and skill levels and designed in a manner that allows for recreational bicyclists to access the Hunter/Smuggler area without the difficulty and exposure of Smuggler Mountain Road which will improve the trail users overall experience. Without access across the AVLT parcel, it is unknown if a trail as described above can be developed.

8. MANAGEMENT ACTIONS

In order to meet the purpose and objectives of the Lindsay Management Plan and to address opportunities, constraints, and planning issues brought forth by the public and staff, management actions are divided into three main components: 1) natural resource management; 2) outdoor recreation management; and 3) general management.

1) Natural Resource Management

Wildlife

- Avoid fragmentation of large blocks of forest and shrub land habitats.
- Study and identify raptor nest sites and establish appropriate temporal and spatial buffers for nesting periods.
- Monitor for T&E species and incorporate into the Smuggler Mountain Open Space Management Plan for monitoring and protection.

Vegetation

- Inventory and map noxious weed species - develop a site-specific noxious vegetation control plan utilizing the inventory data with specific control goals.
- Monitor for T&E species and incorporate into the Smuggler Mountain Open Space Management Plan for monitoring and protection.

2) Recreation Management

Recreation

- Trail construction, recreation development, or infrastructure placement is not recommended outside of the potential recreation area.
- Investigate the opportunities to develop a trail connection through the recreation corridor, from Lani White Trail to the vicinity of the Hunter Creek Trail, for the purpose of developing a multi-use trail providing access to the Hunter Creek Valley.
- Investigate permitted uses and develop partnerships for the creation of a recreational trail on the neighboring open space parcels; City's Hunter Valley Way, County's Randall Park and Silverking Parcel, AVL T's Hammer Head Parcel and all possible user groups; Roaring Fork Outdoor Volunteers and Roaring Fork Mountain Bike Association.
- Manage for trail separation for different user groups creating a safer experience and increased user enjoyment – sign lower Hunter Creek “Hikers Only” and develop another recreational trail that connects to the Hunter Creek Trail.
- ORVs are prohibited except for management purposes.
- If a new recreational trail is developed to access the Hunter Creek Valley, new trail signs and maps should be developed and installed at the Lani White Trail Head, Smuggler Mountain and Hunter Creek Extension.

3) General Management

- Dogs are to be leashed at all times when on the property
- Develop and install appropriate signage – way finding or interpretation
- Upon adoption of this plan, incorporate the management recommendations into the annual planning for the greater Smuggler Mountain Open Space.
- Research the contractual requirement for a memorial bench.

9. CONCLUSION

Both the City of Aspen and the Pitkin County Open Space and Trails Boards feel that the acquisition of the Lindsay Parcel has been an important step in the continued preservation of the flanks of Smuggler Mountain. It is clear that the property holds not only importance in maintaining an uninterrupted view corridor into Hunter Creek Valley but also holds significant ecological value. It is also clear that the property holds the key to a potential recreational, multi-use trail connection from the City of Aspen into Hunter Creek proper. Currently, the only existing trail connection into the valley is extremely rocky, and difficult. As a result, the Hunter Creek Trail is limited to foot traffic only. All other trail users are forced to use the Smuggler Mountain Road or Red Mountain Road. A true multi-use single track trail would be a significant addition to the existing trail network.



June 5, 2013

VIA EMAIL: brian.flynn@cityofaspen.com

Brian Flynn
Open Space and Special Projects Manager
City of Aspen Parks & Open Space
585 Cemetery Lane
Aspen, CO 81611

RE: Lindsay Parcel Preliminary Wildlife Assessment

Dear Brian;

This letter presents preliminary findings regarding wildlife and other ecological attributes of the Lindsay Parcel (the Property). The information contained herein is based on the following: (1) A simple site reconnaissance of the Property on May 20, 2013; (2) Extensive wildlife and ecological surveys of Smuggler Mountain Open Space (SMOS), U.S. Forest Service White River National Forest lands (WRNF), and Aspen Valley Land Trust (AVLT) conservation easements adjacent to or within close proximity to the Property; (3) Consultation with Brian Flynn, Open Space and Special Projects Manager; (4) A review of current Colorado Parks & Wildlife (CPW) Species Activity Mapping (SAM) data (CPW 2012); (5) The author's experience in extrapolating likely wildlife occurrence based on vegetation, elevation, aspect, and locale in Pitkin County and western Colorado.

GENERAL DESCRIPTION

The Property is oddly shaped with a long, narrow panhandle on the north end and a trapezoidal shape at the south end (Fig. 1). Hunter Creek, a fourth order perennial stream (Strahler 1957), meanders north to south along the western boundary of the Property. A deep draw or gully opens up at the southeast side end of the trapezoid. It is approximately 320 feet across at its widest point (east end) and narrows to approximately 131 feet across at the western boundary and occupies approximately 2.5 acres.

VEGETATION

The overstory within the panhandle consists largely of mixed conifer forest (~1.7 ac) with a few patches of mixed montane shrubland (~0.3 ac; Fig. 2). Douglas fir (*Pseudotsuga menziesii*) dominates the mixed conifer with spruce



(*Picea engelmannii*, *P. pungens*), subalpine fir (*Abies bifolia*), and lodgepole pine (*Pinus contorta*) with sporadic quaking aspen (*Populus tremuloides*) occurring as well. Forest floor vegetation is depauperate where little sunlight is reaching the forest floor. Elsewhere, arnica (*Arnica* spp.), grouse whortleberry (*Vaccinium myrtillus*, *V. scoparium*), Parry's lousewort (*Pedicularis parryi*), and mountain lover (*Paxistima myrsinites*) are well established in the understory of this stand.

The mixed montane shrubland is dominated by Gambel oak (*Quercus gambelii*). Other co-dominant or sub-dominant shrubs present include chokecherry (*Prunus virginiana*), snowberry (*Symphoricarpos oreophilus*), serviceberry (*Amelanchier alnifolia*), mountain big sagebrush (*Artemisia tridentata* ssp. *vaseyana*), rabbitbrush (*Chrysothamnus parryi*, *C. viscidiflorus*), and woods rose (*Rosa woodsii*). Co- and sub-dominance varies with aspect with greater representation of xeric types such as sagebrush and rabbitbrush on southerly to westerly aspects and chokecherry and serviceberry increasing on northerly to easterly aspects. Common graminoids include bluebunch wheatgrass (*Pseudoroegneria spicata*), elk sedge (*Carex geyeri*), Kentucky bluegrass (*Poa pratensis*), slender wheatgrass (*Elymus trachycaulus*), smooth brome (*Bromus inermis*), nodding brome (*B. anomalusa*), mountain brome (*B. marginatus*), and Letterman needlegrass (*Stipa lettermanii*). Common forbs include American vetch (*Vicia americana*), northern bedstraw (*Galium boreale*), aspen peavine (*Lathyrus laetivirens*), yarrow (*Achillea lanulosa*), Oregon fleabane (*Erigeron speciosus*), Fendler meadow rue (*Thalictrum fendleri*), and Porter ligusticum (*Ligusticum porteri*).

Bare soils and scree dominate the gulley with young narrowleaf cottonwoods growing in the bottom where eroding soils and moisture accumulates. Shrubs, forbs and grasses are sparse to absent.

In addition, a small portion of the panhandle (<0.10 ac) is occupied by the narrowleaf cottonwood - spruce spp. (*Populus angustifolia* - *Picea pungens*, *P. engelmannii*) riparian woodland that parallels Hunter Creek.

WILDLIFE

The interspersed nature of the mixed conifer, shrublands, and riparian communities and the intergrades between adjacent types with proximity to aspen forest and Hunter Creek provides habitat for a varied array of wildlife for a Property of this size. The diversity of habitats provides an abundance of food, cover, and reproduction sites. Habitat is the spatial and temporal arrangement of food, cover and water that is required to meet the biological needs of one or more individuals of a species. Each wildlife species is adapted to a specific arrangement of these components to provide for their essential life history



requirements. Wildlife associated with the Property is typical of central Colorado montane communities. These species rely on forest, woodland, and shrubland habitat present on the Property during portions of their life cycle. Inclusion of the Hunter Creek riparian area in particular provides essential wildlife habitat. Statewide, riparian areas cover only 3% of the landscape (Kingery et al. 1998) but provide habitat to approximately 80% of Colorado's wildlife species during some stage of their lifecycle (Johanson and Jones 1977).

The Property's wildlife can be broadly grouped as large mammals, predators, small mammals, birds, and herpetofauna. Species of wildlife that may be expected to utilize habitats on the property are described below, with reference to their use of habitat found specifically on the project area.

Large Mammals

Large mammals known to occur on the Property include Rocky Mountain elk (*Cervus elaphus nelsoni*), mule deer (*Odocoileus hemionus hemionus*), and black bear (*Ursus americanus*). The dense conifer and mountain shrublands, coupled with occasionally steep and variable topography, provide high quality hiding and escape cover. Sites providing thermal cover as a refuge from summer heat are found in the areas with a closed canopy on cooler north-facing slopes. Forage opportunities are present for all 3 species and vary seasonally. CPW maps the Property within mule deer summer range and black bear fall concentration but does not map any elk seasonal habitat on the Property. Personal observation, however, reveals that use the Property primarily in the spring and fall transition habitat as they migrate between summer and winter range. Mule deer, on the other hand, can be found on and around the Property from mid-spring when the snow pack begins to recede and bare ground begins to appear until fall when enough snow accumulates to significantly inhibit movement. Similarly, black bears are attracted to the abundant forage available in both the spring, following emergence from their dens such as elk sedge and meadow rue, and in the fall when the shrublands provide a bounty of acorns, chokecherries, serviceberries and other mast.

Predators

Potentially suitable habitat exists on the Property for several predator species, including American marten (*Martes americana*), coyote (*Canis latrans*), red fox (*Vulpes vulpes*), mountain lion (*Felis concolor*), bobcat (*Lynx rufus*), short-tailed weasel (*Mustela erminea*), long-tailed weasel (*M. frenata*), mink (*M. vison*), raccoon (*Procyon lotor*), and striped skunk (*Mephitis mephitis*). Most of these predators seek out the cover of shrubs and forested areas for concealment during the day. Foraging activities take place primarily between dawn and



dusk, at which time these predators rely on the cover of darkness to capture prey. The Property does not provide suitable denning or winter forage habitat for Canada lynx (*L. canadensis*).

Small Mammals

Small mammals potentially include least chipmunk (*Neotamias minimus*), porcupine (*Erethizon dorsatum*), golden-mantled ground squirrel (*Spermophilus lateralis*), montane voles (*Microtus montanus*), deer mice (*Peromyscus maniculatus*), dwarf (*Sorex nanus*), montane (*S. monticolus*), and pygmy shrews (*S. hoyi*), mountain cottontails (*Sylvilagus nuttallii*), red squirrel (*Tamiasciurus hudsonicus*), snowshoe hares (*Lepus americanus*), and yellow-bellied marmots (*Marmota flaviventris*).

There are several bat species that may occur on the Property based upon habitat affinity and geographic distribution (Fitzgerald et al. 1994). These include big brown bat (*Eptesicus fuscus*), little brown bat (*Myotis lucifugus*), long-eared myotis (*M. evotis*), long-legged myotis (*M. volans*), and Townsend's big-eared bat (*Corynorhinus townsendii*).

Birds

Raptors - Suitable foraging and/or nesting habitat for raptors exists on and adjacent to the Property. Although no nests were observed during the site assessment, potential nesting (and foraging) habitat exists on the Property for red-tailed hawks (*Buteo jamaicensis*), American kestrels (*Falco sparverius*), Cooper's hawks (*Accipiter cooperii*), and sharp-shinned hawk (*A. striatus*). Northern goshawks (*A. gentilis*) may hunt on the Property but the habitat is unsuitable for nesting. Owls that may potentially occur on the Property include great horned (*Bubo virginianus*), northern saw-whet (*Aegolius acadicus*), and northern pygmy owl (*Glaucidium gnoma*).

Songbirds - Given the size of the Property, the interspersed plant communities on the Property provide habitat for a relatively rich songbird community. The Gambel oak dominated shrublands on the easement property provide habitat for resident and migratory birds. Birds strongly associated with montane shrublands that likely occur on the Property include dusky flycatchers (*Empidonax oberholseri*), green-tailed towhees (*Pipilo chlorurus*), plumbeous vireos (*Vireo plumbeus*), and Virginia's warbler (*Oreothlypis virginiae*). Birds associated with conifers that are known or likely to occur include American three-toed woodpecker (*Picoides dorsalis*), olive-sided flycatcher (*Contopus cooperi*), ruby-crowned kinglet (*Regulus calendula*), and white-breasted nuthatch (*Sitta carolinensis*). The presence of aspen, cottonwoods, and riparian add to the



species richness with species such as red-naped sapsuckers (*Sphyrapicus nuchalis*), song sparrows (*Melospiza melodia*), warbling vireos (*V. gilvus*), and yellow warblers (*Setophaga petechial*).

Other - One Galliform likely occurs on the Property and another may occur. Dusky grouse (*Dendragapus obscurus*) are known to occur on adjacent SMOS and likely occur on the Property. Merriam’s turkeys (*Meleagris gallopavo merriami*) may occur but have not been confirmed.

Herpetofauna

Reptiles and amphibians that may occur on the Property include western chorus frog (*Pseudacris triseriata*), smooth green snake (*Opheodys vernalis*), and western terrestrial garter snake (*Thamnophis elegans*). Boreal western toads (*Anaxyrus boreas boreas*) may occur on the Property but no surveys have been completed to date.

Endangered, Threatened, Rare & Special Status

There are no species suspected to occur on the Property listed as Threatened or Endangered under the Endangered Species Act (ESA). The Boreal western toad is a Candidate for protection under the ESA and is listed as a State Endangered. Of the wildlife species known or likely to occur on the Property at least 10 are designated by one or more governmental agencies or conservation organizations as having special status.

Common Name	CNHP Global Rank ¹	CNHP State Rank ³	USFS	ESA	CPW Status
American marten	G5	S4	Sensitive		
American three-toed woodpecker	G5	S3S4	Sensitive		
Boreal western toad	G4	S1	Sensitive	Candidate	Endangered
Northern pygmy-owl	G5	S3B	Sensitive		
Dwarf shrew	G4	S2			
Fringed myotis	G4G5	S3	Sensitive		
Northern goshawk	G5	S3B	Sensitive		
Olive-sided flycatcher	G4	S3S4B	Sensitive		
Pygmy shrew	G5	S2	Sensitive		
Townsend’s big-eared bat	G3G4	S2	Sensitive		Concern

Table 1. Wildlife known or likely to occur on CIR1 with special conservation status

¹ See Appendix A for Colorado Natural History Program Ranking.




MANAGEMENT RECOMMENDATIONS

1. Long-term objectives should be established to identify and avoid disturbance or fragmentation of large blocks of forest and shrubland habitats with recreational and travel corridors.
 - a. Wildlife habitat should be managed for maintenance of large, unfragmented, undisturbed blocks of forest and shrubland habitat.
2. Potential impacts to USFS Region 2 Sensitive species and species of special concern should be evaluated prior to introducing new recreational opportunities.
3. Close recreational trails during the peak elk migration period and peak bear forage periods:
 - a. November 1 through December 1
 - b. March 15 through April 15
4. ORVs should be prohibited except for management purposes.
5. Identify all raptor nest sites on the property and establish appropriate temporal and spatial buffers for the nesting period.
 - a. Temporal buffers encompassing at least the early fledgling period would prevent potential recreational disturbance-caused premature fledging and/or decreased prey deliveries to dependent fledglings.
6. Avoid cutting snags for recreation or other management action.
7. Dogs should be leashed at all times when on the Property.

Please let me know if you have questions or comments.

Sincerely,
COLORADO WILDLIFE SCIENCE, LLC



Jonathan Lowsky
Wildlife Biologist/Principal



LITERATURE CITED

- CPW. 2012. Colorado Species Distribution Maps. Available online at <http://ndis.nrel.colostate.edu/>. Natural Diversity Information Source, Colorado Parks & Wildlife, Fort Collins, CO.
- Johanson, R. R. and D. A. Jones. 1977. Importance, preservation and management of riparian habitat: a symposium. U.S. Department of Agriculture Forest Service General Technical Report RM-43.
- Strahler, A. N. 1957. Quantitative analysis of watershed geomorphology. Transactions of the American Geophysical Union **38**:913-920.



BACKGROUND & QUALIFICATIONS

Colorado Wildlife Science, LLC (CWS) is a small wildlife and ecological consulting firm based in Basalt, Colorado, specializing in wildlife research, management, and monitoring, ecological assessments, wetland & riparian delineations, conservation easement baseline inventories, ecological planning, habitat management, and ecological restoration. CWS applies a scientifically sound approach to biological resource studies and management. Our work combines professional integrity and strong academic training with extensive experience working for government, private, and non-profit clients. With an extensive network of professional collaborators that includes plant ecologists, foresters, hydrologists, and soil scientists, CWS leverages the collective knowledge of experienced professionals working toward practical, effective and cost saving solutions.

CWS provides expert services to a diverse array of clients. Since we are a small company, personal attention is ensured. We combine full in-house GIS (ArcGIS) with real time, sub-meter GPS to provide state-of-the-art spatial data, analyses, maps, and presentations. We have prepared Biological Assessments and Biological Evaluations, and contributed to EAs and EISs. CWS has worked with large private firms such as Jacobs; Carter and Burgess; Parsons; CH2MHILL; SAIC; and SE Group as well as city and county agencies and governments such as City of Aspen, City of Glenwood Springs, Pitkin County, Colorado Department of Transportation, Roaring Fork Transportation Agency, and the US Forest Service. CWS is currently collaborating on the Hunter-Smuggler Cooperative Plan near Aspen. CWS has prepared over 60 conservation easement baseline and Present condition reports for 8 different conservation organizations in 5 western Colorado counties.

Owner and Wildlife Biologist Jonathan Lowsky, M.S. Wildlife Biology, Colorado State University, has a broad range of knowledge. With more than 19 years of professional experience with federal (US Forest Service), state (Colorado Division of Wildlife), and county agencies as well as two major universities (Colorado State University and University of Washington), Jonathan's career has focused on a diverse array of wildlife from bighorn sheep, elk, and songbirds to northern goshawks, flying squirrels, small mammals, and spotted bats. In addition, Jonathan served as the Pitkin County Wildlife Biologist for over 7 years. As such, he provides unique experience regarding land use planning and residential development in the Roaring Fork Valley and Western Colorado.

Mr. Lowsky's experience includes biological assessments and evaluations for NEPA compliance, conservation planning, GIS mapping and modeling, wildlife research, and ecological monitoring design and implementation, as well as wetland and riparian delineations, evaluations, and restoration. He has authored management plans and conservation easement baseline inventory reports and published scientific papers. An expert birder, experienced tracker, certified wetlands delineator, trained fluvial geomorphologist, and passionate observer of wildlife, Jonathan has spent countless hours studying and appreciating Colorado's diverse ecological communities. A detailed description of Mr. Lowsky's professional experience and references are available. For additional information, please visit our website at www.coloradowildlifescience.com.



APPENDIX A. NatureServe and Colorado Natural History Program Ranking

ELEMENT RANKINGS

CNHP uses an element ranking system that emphasizes the number of occurrences at distinct localities as an index of biological rarity. This index is based on the assumption that an element found in one place is more imperiled than an element found in many places. The factor of rarity is then modified by information on the size of the geographic range, the total number of individuals, trends in population and distribution, identifiable threats, fragility, and the number of already protected occurrences. Each element is then assigned a rank that indicates its relative degree of imperilment on a five point scale:

1. Critically imperiled or extremely rare; generally five or fewer occurrences;
2. Imperiled or very rare; usually 6 to 20 occurrences;
3. Very rare or found in a restricted range; 21-100 occurrences;
4. Apparently secure; and
5. Demonstrably secure.

Element ranks are assigned in terms of imperilment within Colorado, the state rank, and the element's imperilment over its entire range, its global rank. The global rank, or G-rank, sets the highest priorities. The state rank, or S-rank, is used in discerning state and regional priorities. For example, an element with a rank of G3S2 will receive higher priority than an element with a rank of G5S1 due to its global rank. Together these two ranks provide an instant picture of an element's degree of imperilment.

Elements that receive a rank of S1, S2, and S3 are used to set species protection priorities. Elements with a ranking of S3S4 are "watchlisted"; occurrence data is collected and periodically analyzed to determine if more active tracking is warranted. Any element more common than a "watchlisted" element, with an S-rank of S4 or S5, is not closely monitored. Accepted subspecies are also included on the CNHP list, but they receive less priority than an equivalently ranked or imperiled species.

This single ranking system identifies all imperiled elements except those that are migratory. When ranking migratory elements, it is necessary to distinguish between breeding, non-breeding, and resident species. Ranking followed by a "B", e.g. S1B, indicates that the rank applies only to the status of breeding occurrences. Ranking followed by an "N", e.g. S1N, refer to the non-breeding status, typically during migration and winter. Elements without this notation are believed to be year-round residents within the state. A complete description of each of the Natural Heritage global and state ranks is provided in Tables 1A and 1B, respectively.

LEGAL DESIGNATIONS

Natural Heritage rarity ranks should not be interpreted as legal designations. Although most species protected under state or federal endangered species laws are extremely rare, not all rare species receive legal protection. Legal status is designated by either the U.S. Fish & Wildlife Service under the Endangered Species Act or by the Colorado Division of Wildlife under Colorado Statutes 33-2-105 Article 2. In addition, the U.S. Forest Service recognizes some species as "Sensitive," as does the Bureau of Land Management. Table 2 defines the special status assigned by these agencies and provides a key to the abbreviations used by CNHP.

Please note: The U.S. Fish and Wildlife Service has issued a Notice of Review in the February 28 Federal Register for plants and animal species that are "candidates" for listing as endangered or threatened under the Endangered Species Act. The revised candidate list replaces an old system that listed many more species under three categories: Category 1 (C1), Category 2 (C2), and Category 3 (including 3A, 3B, 3C). Beginning with the February 28 notice, the Service will recognize as candidates for listing only species that would have been included in the former Category 1. This includes those species for which the Service has sufficient information on their biological status and threats to propose them as endangered or threatened under the Endangered Species Act.

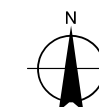
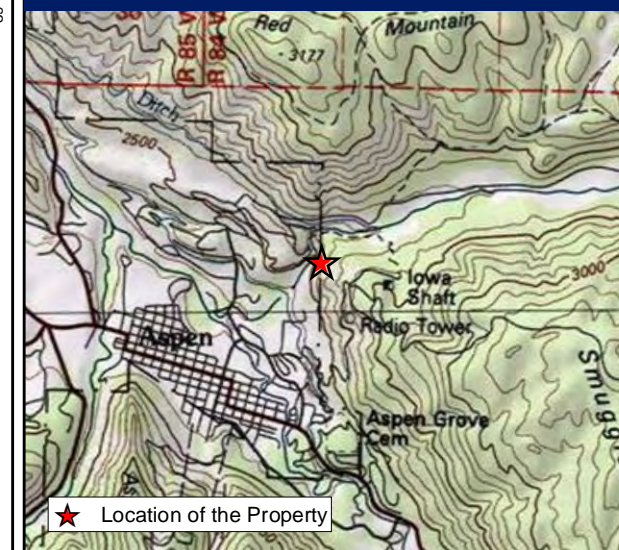
Candidate species listed in the February 28 Federal Register are indicated with a "C". Former Category 2 and Category 3 codes are noted in this publication in parentheses, (e.g. (C2)). Although obsolete legal status codes will not be provided in future issues, CNHP will continue to maintain them in its Biological and Conservation Data system for reference.






Lindsay Property

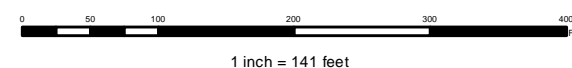
Preliminary Wildlife & Ecological Assessment

Figure 1. Aerial view of the Property and vicinity



Legend:

-  Subject Property
-  Smuggler Mountain Open Space
-  Recreational Trails

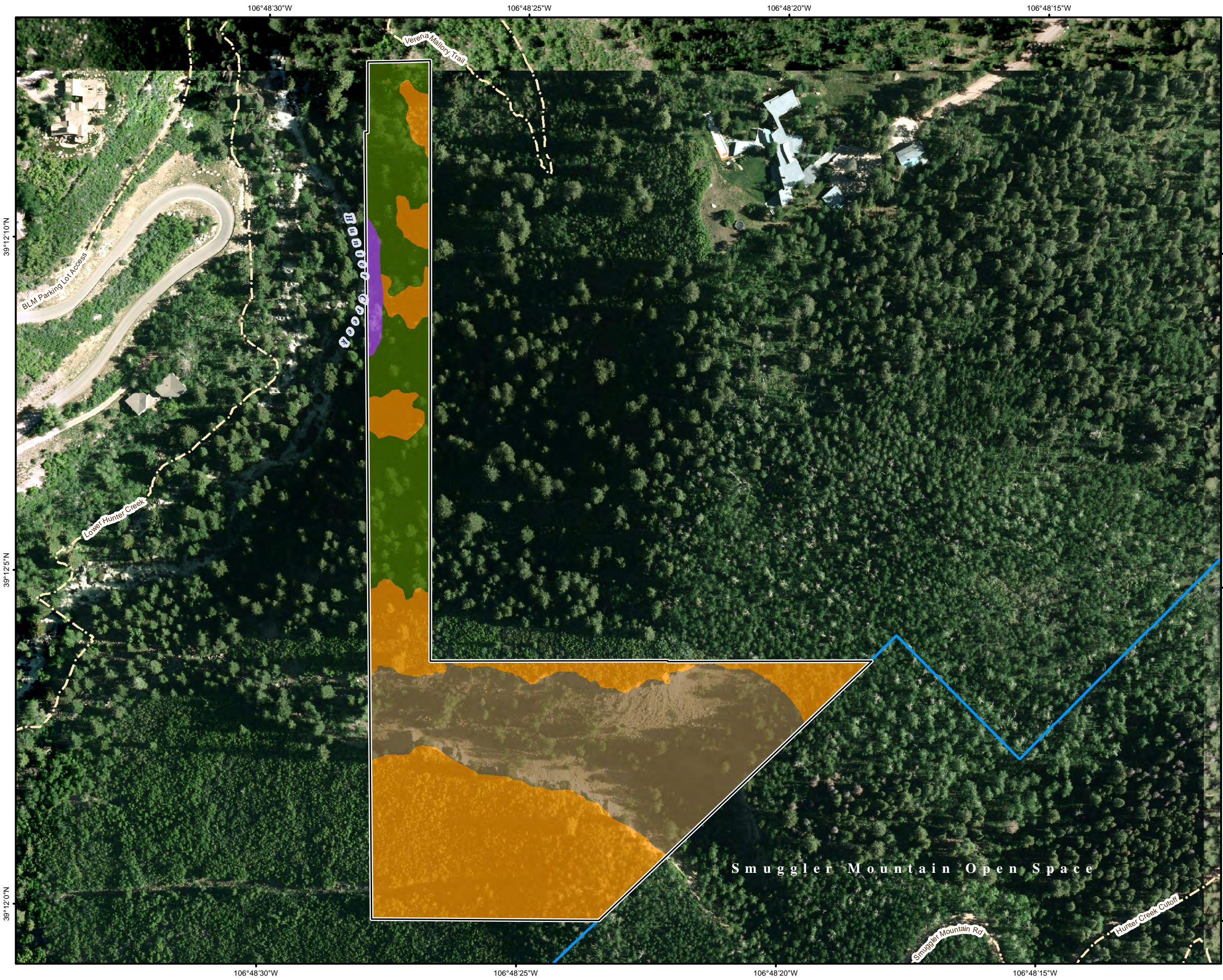


NOTE: Boundaries are approximate

Basemap Source(s):
Aspen Pitkin GIS 2010 Orthophotos



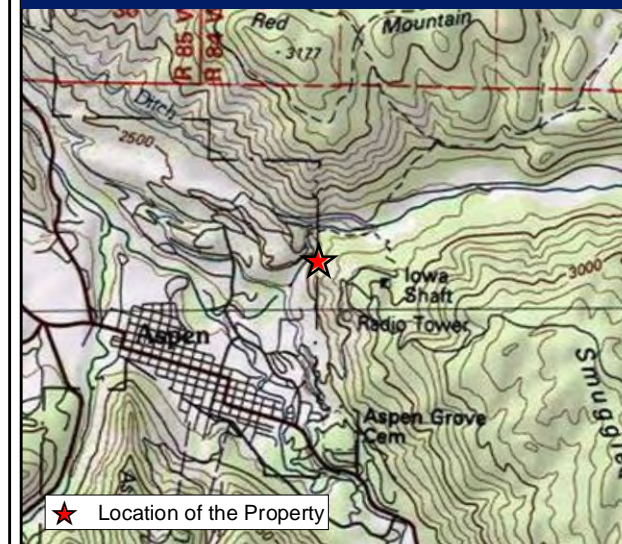
COLORADO WILDLIFE SCIENCE LLC
0100 Elk Run Dr, Ste 128, Basalt, CO 81621
970.927.4549
info@coloradowildlifesience.com
<http://coloradowildlifesience.com>



Lindsay Property

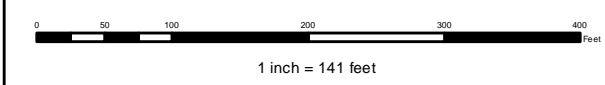
Preliminary Wildlife & Ecological Assessment

Figure 2. Vegetation



Legend:

- Subject Property
- Smuggler Mountain Open Space
- Recreational Trails
- Gorge
- Mixed Conifer Forest
- Mixed Montane Shrubland
- Riparian Woodland



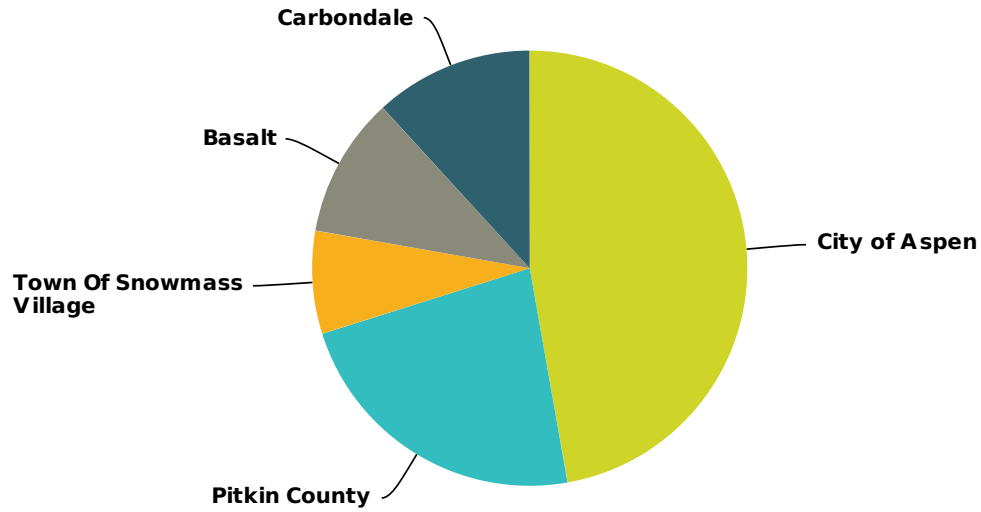
NOTE: Boundaries are approximate

Basemap Source(s):
Aspen Pitkin GIS 2010 Orthophotos

COLORADO WILDLIFE SCIENCE LLC
 0100 Elk Run Dr, Ste 128, Basalt, CO 81621
 970.927.4549
 info@coloradowildlifesience.com
 http://coloradowildlifesience.com

Q1 Where do you live?

Answered: 144 Skipped: 0

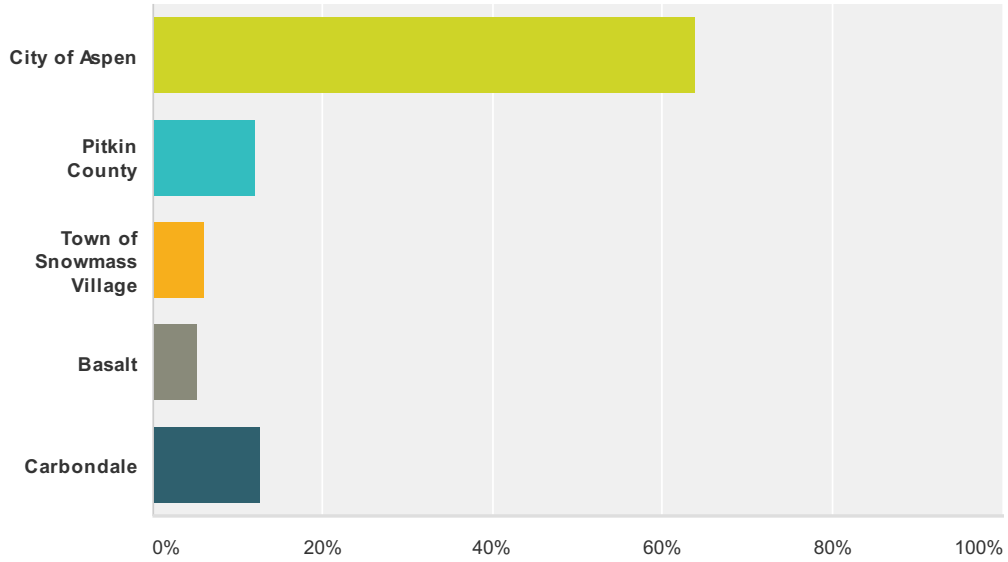


Answer Choices	Responses
City of Aspen	47.22% 68
Pitkin County	22.92% 33
Town Of Snowmass Village	7.64% 11
Basalt	10.42% 15
Carbondale	11.81% 17
Total	144

#	Other (please specify)	Date
1	Crested Butte, former Aspen resident, family in the valley	6/13/2013 6:54 PM
2	Missouri Heights	6/13/2013 3:19 PM
3	woody creek	6/11/2013 10:21 PM
4	Starwood subdivision	6/11/2013 7:28 PM
5	N40 / AABC	6/3/2013 9:50 AM

Q2 Where do you Work?

Answered: 133 Skipped: 11

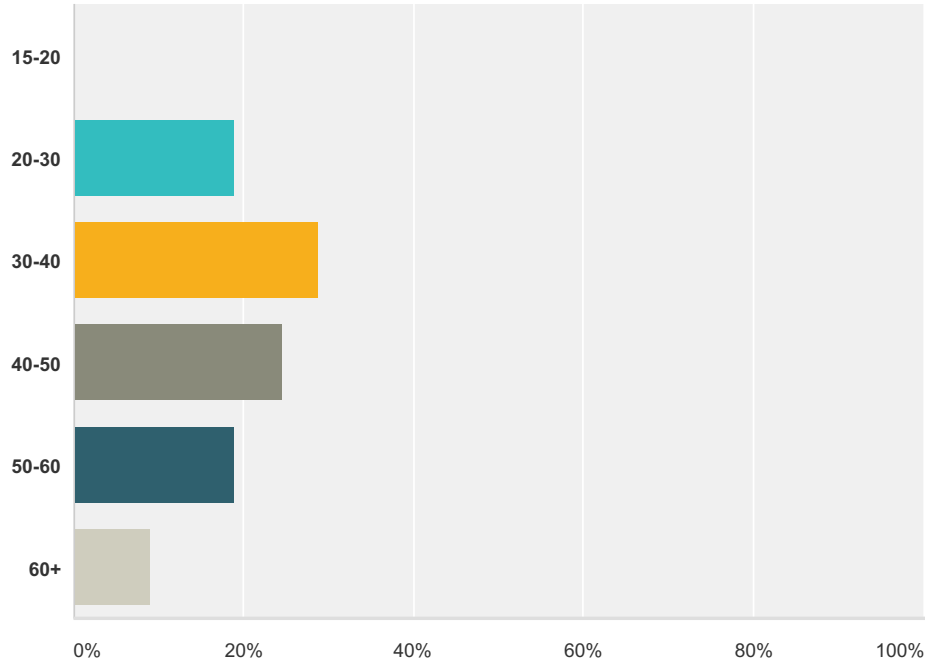


Answer Choices	Responses
City of Aspen	63.91% 85
Pitkin County	12.03% 16
Town of Snowmass Village	6.02% 8
Basalt	5.26% 7
Carbondale	12.78% 17
Total	133

#	Other (please specify)	Date
1	Glenwood Springs,	6/17/2013 12:04 PM
2	NA	6/14/2013 3:41 PM
3	Retired	6/14/2013 11:04 AM
4	retired	6/13/2013 6:54 PM
5	work from home	6/13/2013 4:18 PM
6	Big Agnes/ Honey Stinger	6/13/2013 3:19 PM
7	Student	6/13/2013 1:59 PM
8	retired	6/13/2013 1:35 PM
9	All of the above, in the "Service" sector.	6/11/2013 5:26 PM
10	AABC	6/11/2013 5:14 PM
11	Roaring Fork Valley -Western Colorado	6/6/2013 11:02 AM
12	USFS	5/24/2013 6:08 PM

Q3 How old are you?

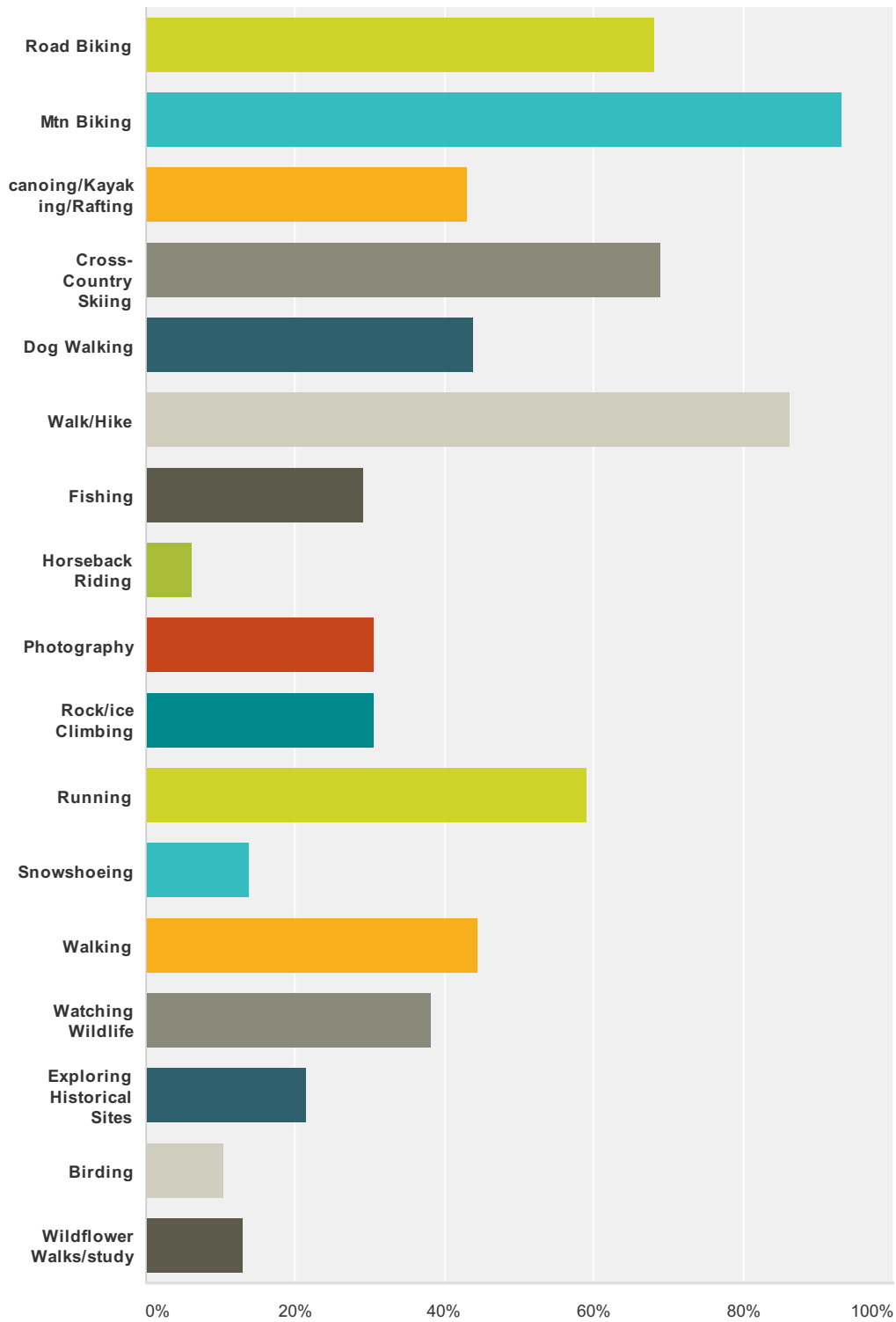
Answered: 143 Skipped: 1



Answer Choices	Responses	Count
15-20	0%	0
20-30	18.88%	27
30-40	28.67%	41
40-50	24.48%	35
50-60	18.88%	27
60+	9.09%	13
Total		143

Q4 Indicate your outdoor activities/interest that you enjoy while recreating on Open Space

Answered: 144 Skipped: 0



Answer Choices	Responses
Road Biking	68.06% 98
Mtn Biking	93.06% 134

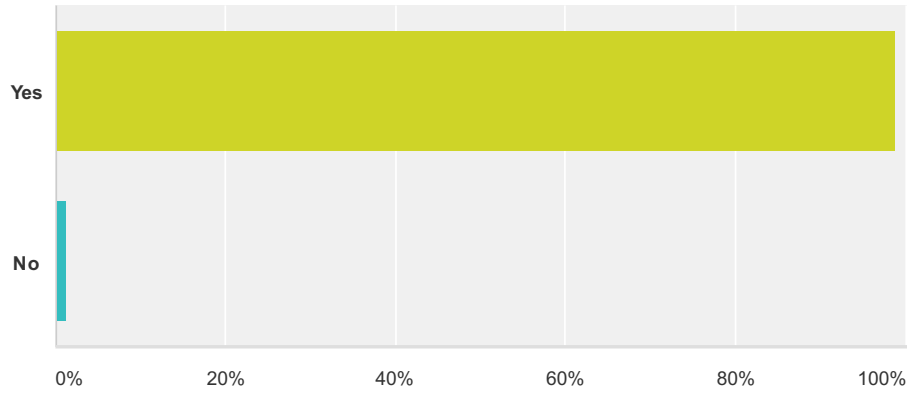
Lindsay Public Survey

canoing/Kayaking/Rafting	43.06%	62
Cross-Country Skiing	68.75%	99
Dog Walking	43.75%	63
Walk/Hike	86.11%	124
Fishing	29.17%	42
Horseback Riding	6.25%	9
Photography	30.56%	44
Rock/ice Climbing	30.56%	44
Running	59.03%	85
Snowshoeing	13.89%	20
Walking	44.44%	64
Watching Wildlife	38.19%	55
Exploring Historical Sites	21.53%	31
Birding	10.42%	15
Wildflower Walks/study	13.19%	19
Total Respondents: 144		

#	Other (please specify)	Date
1	Dirt motorcycling	6/17/2013 12:04 PM
2	standup paddleboarding	6/13/2013 3:27 PM
3	Hockey	6/13/2013 2:49 PM
4	hunting	6/13/2013 12:55 PM
5	Dirt biking	6/4/2013 6:57 AM
6	Like to all of the above but don't do on Pitco open space but other places	5/24/2013 6:08 PM

Q5 Do you currently Recreate on Smuggler Mountain Open Space

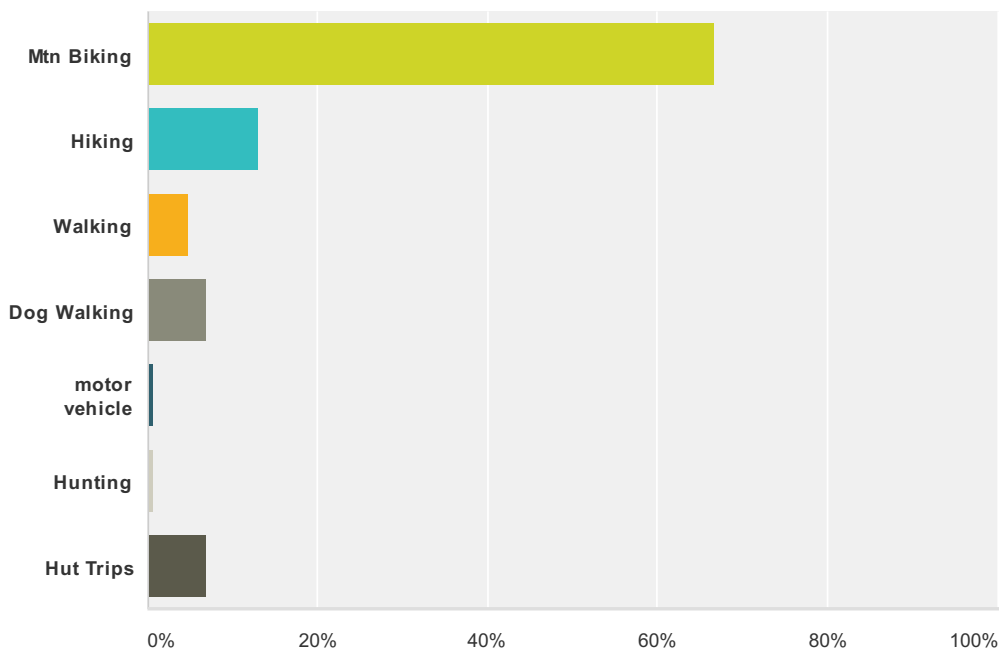
Answered: 144 Skipped: 0



Answer Choices	Responses	
Yes	98.61%	142
No	1.39%	2
Total		144

Q6 If YES, please indicate which activity you perform

Answered: 144 Skipped: 0



Answer Choices	Responses	Count
Mtn Biking	66.67%	96
Hiking	13.19%	19
Walking	4.86%	7
Dog Walking	6.94%	10
motor vehicle	0.69%	1
Hunting	0.69%	1
Hut Trips	6.94%	10
Total		144

#	Other (please specify)	Date
1	plus hiking, hut trips, hunting (survey form flawed)	6/23/2013 9:50 AM
2	Running	6/18/2013 9:32 AM
3	I also ski and motorcycle on smuggler.	6/17/2013 12:04 PM
4	Mountain biking, hiking, walking	6/14/2013 3:41 PM
5	Running	6/14/2013 11:53 AM
6	Trail Running	6/14/2013 10:40 AM
7	Hike or occasional ski tour	6/14/2013 8:54 AM
8	Running	6/13/2013 10:20 PM
9	This question is non representative. You should be able to select multiple options. Is hunting allowed on Smuggler Mountain Open space?	6/13/2013 9:43 PM
10	running	6/13/2013 6:54 PM
11	every thing above except hunting or dog walking	6/13/2013 5:28 PM

Lindsay Public Survey

12	running	6/13/2013 4:34 PM
13	Need multiple options. Mtn Bike, hike, and hut trips.	6/13/2013 4:19 PM
14	Trail Running	6/13/2013 4:17 PM
15	Running. Why no button?	6/13/2013 4:06 PM
16	And dog walking and hiking	6/13/2013 3:54 PM
17	hiking, running, dog walking	6/13/2013 3:36 PM
18	mt biking, hiking, hut trips	6/13/2013 3:22 PM
19	All of the above	6/13/2013 2:25 PM
20	all of the above	6/13/2013 1:41 PM
21	Hiking, Dog walking, hut trips as well	6/13/2013 12:57 PM
22	running	6/11/2013 10:21 PM
23	Running	6/11/2013 7:28 PM
24	Hut trips	6/11/2013 5:26 PM
25	horse riding in hunter creek valley	6/11/2013 2:26 PM
26	backpacking	6/6/2013 10:39 AM
27	Dirt Biking	6/4/2013 6:57 AM
28	Mountain biking, hiking, running	5/24/2013 8:13 AM

Q7 The City of Aspen and Pitkin County recently purchased an adjacent property to Smuggler Mountain Open Space. The property is located between the Lani White Trail and the Hunter Creek/Vereena Mallory Trail along Hunter Creek. What uses, including preservation for habitat would you like to see on the property?

Answered: 144 Skipped: 0

#	Responses	Date
1	Improve recreational carrying capacity of the area	6/23/2013 9:50 AM
2	Habitat preservation definitely (season closures if necessary to protect wildlife) hiking and biking trails (no motorized vehicles)	6/20/2013 11:41 AM
3	Mountain biking and hiking.	6/19/2013 7:21 AM
4	mtb trail and connections	6/18/2013 10:47 AM
5	Running, Mountain biking	6/18/2013 9:32 AM
6	Mt bike trails	6/17/2013 6:10 PM
7	I'd like to see a portion of the Lindsay parcel be managed to provide a Portal trail from Lanni White Trail to Verana Mallory Park.	6/17/2013 3:52 PM
8	Multi use including hiking and biking	6/17/2013 3:44 PM
9	a simple singletrack bike trail and a separate walking/horse trail.	6/17/2013 12:04 PM
10	wildland urban interface education	6/16/2013 8:02 PM
11	Hiking, Mountain Biking	6/16/2013 10:39 AM
12	It should be managed in conjunction with the rest of Smuggler Open Space, and should be used to extend the trail system in the area.	6/16/2013 10:03 AM
13	I would like to see a portion of this land managed to provide a portal for mountain biking from the Lani White Trail to the Vereena Mallory Trail.	6/15/2013 9:07 PM
14	dog restriction	6/15/2013 8:36 PM
15	Mtn bike trail that would take bikers and other trail users off the Smuggler Road	6/15/2013 6:34 PM
16	Mtn biking, Xcountry ski route	6/15/2013 5:53 PM
17	hiking biking	6/15/2013 4:55 PM
18	mtn biking	6/15/2013 2:08 PM
19	Alternative access for bikers, hikers and walkers to Hunter Creek Valley .	6/15/2013 12:28 PM
20	More bike trails	6/15/2013 6:34 AM
21	Trails, trails more trails	6/14/2013 8:08 PM
22	more trails for running riding	6/14/2013 8:04 PM
23	Biking hiking	6/14/2013 7:12 PM
24	Mountain biking access, both up and down, while still preserving the sense of being in nature that characterizes so many of the existing trails.	6/14/2013 3:41 PM
25	Access for mt bike and hikers	6/14/2013 2:19 PM
26	Hiking with no dogs allowed for habitat preservation	6/14/2013 1:32 PM
27	Yes	6/14/2013 12:56 PM
28	Mt Bike trail	6/14/2013 11:59 AM
29	Single track for biking/hiking/running.	6/14/2013 11:53 AM
30	Portal trail from Lanni White trail to Vereena Mallory .	6/14/2013 11:04 AM

Lindsay Public Survey

31	Trails	6/14/2013 10:40 AM
32	I would like to see well planned additional single track for hiking and mnt biking	6/14/2013 10:32 AM
33	Trail connection for biking between town and hunter creek so you don't have to ride up red man or smuggler	6/14/2013 9:05 AM
34	Biking/hiking	6/14/2013 8:54 AM
35	Mountain biking trails	6/14/2013 8:20 AM
36	Walking trail	6/14/2013 7:25 AM
37	Mountain biking/hiking trails to connect back to the base of Smuggler via Lani White would be an asset here.	6/14/2013 7:17 AM
38	Mountain biking, hiking, running	6/14/2013 7:00 AM
39	I would like it to be managed to provide a Portal trail from Lanni White Trail to Verana Mallory Park open to mountain biking and hiking.	6/14/2013 6:47 AM
40	biking and hiking	6/14/2013 6:27 AM
41	I would love to see the trail connection mentioned below.	6/14/2013 6:20 AM
42	Hiking, biking, hut trip access, anything NON motorized	6/14/2013 5:31 AM
43	A connecting trail for all types of non motorized use. Hikers, mountain bikers, families, runners. And something less rocky then the trails near hunter creek. Uphill mountain bike friendly as well.	6/14/2013 3:11 AM
44	A recreational connection from Aspen directly to Hunter Creek	6/13/2013 11:41 PM
45	Mountain biking and hiking	6/13/2013 10:46 PM
46	mt biking, walking, hiking	6/13/2013 10:35 PM
47	Running	6/13/2013 10:20 PM
48	Mountain biking and hiking	6/13/2013 10:13 PM
49	Hiking, biking, dog friendly	6/13/2013 10:06 PM
50	Mountain biking,hiking	6/13/2013 9:53 PM
51	Biking and hunting	6/13/2013 9:43 PM
52	More trails available for Mountain Biking	6/13/2013 9:35 PM
53	To help facilitate safe and convenient mountain bike access both into and out of the hunter creek valley (i.e., by passing smuggler climb and red mountain rd descent).	6/13/2013 9:30 PM
54	Hiking, Mtn biking	6/13/2013 9:27 PM
55	A portal trail link between lani white and vereena Mallory trail.	6/13/2013 9:09 PM
56	More Access! There is plenty of space on that hillside to maintain the habitat and provide designated access points to those who appreciate recreating in the out of doors.	6/13/2013 7:04 PM
57	Mt. Biking	6/13/2013 7:02 PM
58	Trail access that provides an alternative to the Smuggler Mountain Road such as the proposed Portal Trail.	6/13/2013 6:54 PM
59	mountain biking trails	6/13/2013 6:27 PM
60	Mountain bike trails	6/13/2013 6:18 PM
61	mountain biking.	6/13/2013 5:53 PM
62	New singletrack trail	6/13/2013 5:50 PM
63	hike and bike	6/13/2013 5:41 PM
64	Mountain biking to hunter creek	6/13/2013 5:28 PM
65	A single track trail that can be ridden via mt bike up and down. I'd like to avoid having to ride up and down Red Mt Road to access the upper Hunter Creek Valley .	6/13/2013 5:20 PM
66	mountain biking	6/13/2013 5:16 PM
67	MTB trail access	6/13/2013 5:02 PM
68	A better trail access from town into the Hunter Creek valley for bikers.	6/13/2013 4:56 PM
69	Mountain biking access to the Hunter Creek valley .	6/13/2013 4:42 PM
70	Single track trail	6/13/2013 4:39 PM
71	connect the trails, by making a new trail across the Lindsay Property	6/13/2013 4:34 PM

Lindsay Public Survey

72	Low impact recreation and preservation for habitat.	6/13/2013 4:26 PM
73	Mountain Biking	6/13/2013 4:19 PM
74	New trail. Access other than smuggler would be great.	6/13/2013 4:19 PM
75	mtb trails	6/13/2013 4:18 PM
76	preservation for habitat, mtn biking, hiking, trail running	6/13/2013 4:17 PM
77	Small trail and preservation for habitat.	6/13/2013 4:13 PM
78	mountain biking	6/13/2013 4:12 PM
79	I support an alternate trail option to access Hunter Creek from the Hunter Creek Trail(too rocky) and Smuggler(too crowded and hot).	6/13/2013 4:06 PM
80	More biking singletrack. Really need an option from Hunter Creek to town that is mountain bike friendly .	6/13/2013 4:01 PM
81	More Mtn. Biking trails	6/13/2013 3:54 PM
82	A low impact mountain bike trail	6/13/2013 3:51 PM
83	mtn biking and hiking	6/13/2013 3:45 PM
84	Bike/hike trails!	6/13/2013 3:44 PM
85	I'd love to see a trail that is accessible to both walkers/hikers (PEDS) and bikers.	6/13/2013 3:37 PM
86	Multi-use trail	6/13/2013 3:36 PM
87	mountain bike trails	6/13/2013 3:27 PM
88	Hiking, biking, skiing, snowshoeing	6/13/2013 3:27 PM
89	Mountain Biking Trail	6/13/2013 3:23 PM
90	Mt biking & hiking trails	6/13/2013 3:22 PM
91	better access to Smuggler, better aesthetic, better wild flowers.	6/13/2013 3:19 PM
92	Hiking, walking, mountain biking, bird watching, dogs on leash	6/13/2013 3:19 PM
93	Mountain biking, trail running	6/13/2013 3:18 PM
94	Singletrack mountain biking.	6/13/2013 3:17 PM
95	Singletrack mountain bike trails! And powder skiing in the winter.	6/13/2013 3:16 PM
96	Preservation for hiking and biking trails.	6/13/2013 3:15 PM
97	Mountain bike trails, that can also be used for hiking and walking	6/13/2013 3:12 PM
98	Mountain bike and hiking trails	6/13/2013 3:06 PM
99	Non-motorized Multi use trail (hiking, biking, snowshoeing)	6/13/2013 3:01 PM
100	Mountain bike connection.	6/13/2013 2:58 PM
101	Mountain bike trail connecting town to the Hunter Creek Valley	6/13/2013 2:50 PM
102	I would like to see the new parcel (mentioned) be managed to include a trail portal from Hunter Creek to town for Mtn Bike access.	6/13/2013 2:49 PM
103	More mtn bike trails	6/13/2013 2:47 PM
104	it would be great if a portion of this area be used as a portal trail open to mtn biking	6/13/2013 2:45 PM
105	Mountain Biking/hiking	6/13/2013 2:36 PM
106	Mountain bike trail	6/13/2013 2:33 PM
107	Please allow a connecting bike trail so mountain bikes do not need to use red mountain road.	6/13/2013 2:25 PM
108	A new trail connecting Hunter Creek Valley to Aspen.	6/13/2013 2:24 PM
109	Mountain Biking and Hiking	6/13/2013 2:21 PM
110	Mt biking	6/13/2013 2:00 PM
111	I would love to see the development of the Portal Trail. I think a well-built single track between the Verena Mallory Park and Lani White Trail would be a great new addition to the area that would allow bikers, hikers, runners, and wildlife watchers to access the Hunter Creek Valley via a great new single track trail.	6/13/2013 1:59 PM
112	biking, dog walking	6/13/2013 1:49 PM

Lindsay Public Survey

113	i like the plan for the proposed trail on the lindsay property that will be open to everyone and things, including wild animals, tourists and bicycles.	6/13/2013 1:41 PM
114	A trail linking Lanni White Trail to Verana Mallory Park would be a really nice addition to the system.	6/13/2013 1:35 PM
115	Any kind of non motorized activity	6/13/2013 1:33 PM
116	Single track trail	6/13/2013 1:17 PM
117	A novice bike trail!	6/13/2013 1:05 PM
118	Mountain biking	6/13/2013 12:58 PM
119	Link mtn. biking to the valley floor.	6/13/2013 12:57 PM
120	More ride-able and hike-able access to the Hunter Creek trails	6/13/2013 12:57 PM
121	mt biking hiking hunting	6/13/2013 12:55 PM
122	Mtn biking connection to town.	6/13/2013 12:52 PM
123	Multi use trail- hiking, running, and mountain biking	6/13/2013 12:50 PM
124	Mtn biking, hiking	6/13/2013 12:44 PM
125	Mtn biking Any seasonal closures that may need to happen for wildlife migration.	6/13/2013 10:06 AM
126	all and any	6/11/2013 10:21 PM
127	Mtn. bike trail, hiking trail that allows dogs	6/11/2013 9:27 PM
128	I would like to see a multi use trail to link up to the Hunter Creek trail system that would be usable by mountain bikes.	6/11/2013 7:28 PM
129	Mountain biking, hiking and back country skiing	6/11/2013 5:26 PM
130	It needs an alternative trail to Smuggler for Hikers and bikers. I believe that is what the land owner who sold it to Pitkin County wanted to see	6/11/2013 5:14 PM
131	same as other trails--	6/11/2013 2:26 PM
132	A trail connection	6/6/2013 11:02 AM
133	Habitat Preservation	6/6/2013 10:39 AM
134	Seasonal wildlife closures	6/6/2013 8:15 AM
135	preservation only	6/5/2013 6:06 PM
136	Not sure. Your maps are VERY UNCLEAR. It is VERY HARD to figure out where exactly this piece of property is.	6/4/2013 6:57 AM
137	It would be great to see a connection between the Vereena Mallory trail and the last switchback on the Smuggler trail before the deck.	6/3/2013 9:50 AM
138	mountain biking	5/30/2013 8:46 AM
139	Hiking	5/28/2013 11:49 AM
140	Not sure	5/24/2013 6:08 PM
141	This is the ideal area to build a mtn biking trail that gets riders down the mountain without having to use the dangerous Red Mtn road.	5/24/2013 8:42 AM
142	This formerly private property was the missing link to allow for creation of a trail that would allow mountain bikers to descend from Hunter Creek to the valley floor on a dirt single track trail. (The HC trail, paralleling the creek is too steep and rocky for most cyclists.). A citizen led effort resulted in the transfer of the land into Open Space hands specifically for the creation of a trail alignment that will connect Lani White to Vereena Mallory. This trail will utilize only a sliver of the property, leaving the remainder to be dedicated to the preservation of wildlife habitat.	5/24/2013 8:13 AM
143	biking	5/23/2013 10:07 PM
144	consistency with existing open space planning	5/22/2013 3:00 PM

Q8 A potential trail connection between the Hunter Creek/Vereena Mallory and the Lani White Trail has been proposed. Do you feel this connection should be made and for what types of non-motorized uses?

Answered: 144 Skipped: 0

#	Responses	Date
1	This connection would improve the recreational experience available. Consider offering to non-motorized human-powered users only. If the trail becomes popular, consider odd/even day management for mountain-biking and foot travel.	6/23/2013 9:50 AM
2	Yes, hiking and biking	6/20/2013 11:41 AM
3	Mountain biking and hiking.	6/19/2013 7:21 AM
4	running, mtb-ing	6/18/2013 10:47 AM
5	Yes - running and mtn biking	6/18/2013 9:32 AM
6	Bikes and hiking	6/17/2013 6:10 PM
7	Yes. Mountain Biking.	6/17/2013 3:52 PM
8	Yes. Multi use including hiking and biking. I don't know enough about horses to make a recommendation	6/17/2013 3:44 PM
9	1) walking/horse and 2) mountain biking.	6/17/2013 12:04 PM
10	bicycles	6/16/2013 8:02 PM
11	Yes, for hiking and mountain biking	6/16/2013 10:39 AM
12	All, Mtn Biking, Hiking, wildlife watching	6/16/2013 10:03 AM
13	Yes. Hiking. Mountain biking.	6/15/2013 9:07 PM
14	yes, for runners, hikers, and bikers	6/15/2013 8:36 PM
15	biking and hiking, running, walking	6/15/2013 6:34 PM
16	Mtn biking	6/15/2013 5:53 PM
17	Yes for Mountain biking and hiking	6/15/2013 4:55 PM
18	yes	6/15/2013 2:08 PM
19	All non motorized activities	6/15/2013 12:28 PM
20	biking	6/15/2013 6:34 AM
21	Yes, hiking, running, biking.	6/14/2013 8:08 PM
22	biking and hiking and YES!	6/14/2013 8:04 PM
23	Bikes horses	6/14/2013 7:12 PM
24	The connection should be designed with mountain bikers in mind as that is the group of users most limited by the current options. Hikers could benefit from the connection as well, but they already have at least a couple of other scenic routes that will get them directly down and into town. That ride down Ride Mountain is neither pretty nor particularly safe.	6/14/2013 3:41 PM
25	Bikes, Hikers!	6/14/2013 2:19 PM
26	Yes, for hiking and mtn biking	6/14/2013 1:32 PM
27	Yes! For walking, running, biking	6/14/2013 12:56 PM
28	Mt Bike	6/14/2013 11:59 AM
29	Yes, please. This should be for biking, hiking, running.	6/14/2013 11:53 AM
30	Yes This connection should be made for walking and mountain biking.	6/14/2013 11:04 AM
31	yes. Mountain Biking, Hiking and Running	6/14/2013 10:40 AM
32	yes, hiking and mnt biking	6/14/2013 10:32 AM

Lindsay Public Survey

33	Yes for hiking and biking!	6/14/2013 9:05 AM
34	It should be made and a multi-use trail (hike/bike) would be well received.	6/14/2013 8:54 AM
35	Yes, Mtn biking	6/14/2013 8:20 AM
36	Walking or biking	6/14/2013 7:25 AM
37	Yes a connection should be made, the more interconnected a system the better. It should be designed for hiking and mountain biking at a minimum.	6/14/2013 7:17 AM
38	Yes! Mountain biking, hiking, running	6/14/2013 7:00 AM
39	Yes it should be connected for use to access the Huntercreek trail system from town. I would like to see it open to biking and hiking	6/14/2013 6:47 AM
40	yes for hiking and biking	6/14/2013 6:27 AM
41	Yes, make the connection! Hiking/walking and mountain biking. I'd keep the horses out (too much potential for conflict) and would personally love to see this trail dog-free (but know this is unlikely).	6/14/2013 6:20 AM
42	Hiking, biking horse back riding, x-c skiing	6/14/2013 5:31 AM
43	Yes it should be made. For all types of non motorized use. Mountain biking, hiking, dog walking, running. A suitable grade uphill that is friendly for uphill bike traffic. It is a trail many of us are very excited about having.	6/14/2013 3:11 AM
44	This is a critical connection that reduces the overall vertical elevation gain that is required to access the Hunter Creek Valley. Smuggler Mountain Road is not a pleasant experience.	6/13/2013 11:41 PM
45	Yes. Hiking, mountain biking.	6/13/2013 10:46 PM
46	mt biking, walking, hiking	6/13/2013 10:35 PM
47	nah	6/13/2013 10:20 PM
48	An additional trail connection in this area would be awesome. With the heavy trail use during optimal summer months, the more options the better to thin the crowds. The Smuggler Open Space and the Lindsay Parcel are valuable assets to the community and given their proximity to town they should be judiciously developed to provide access to the open spaces in our backyard. The portal trail connection on the Lindsay parcel is nothing short of brilliant.	6/13/2013 10:13 PM
49	Bikes	6/13/2013 10:06 PM
50	mountain bikes	6/13/2013 9:53 PM
51	biking only. Hikers can use the Smuggler road, and the Lani white/hunter creek options. A bike trail is needed without a hiker/biker confliction.	6/13/2013 9:43 PM
52	All non-motorized uses including bikes	6/13/2013 9:35 PM
53	To help facilitate safe and convenient mountain bike access both into and out of the hunter creek valley (i.e., bypassing smuggler climb and red mountain rd descent).	6/13/2013 9:30 PM
54	Hiking, Mtn biking	6/13/2013 9:27 PM
55	Hiking, dog walking, mountain biking	6/13/2013 9:09 PM
56	There is absolutely NO reason that a trail should not be made. If it is made appropriately for bicycles or runners, this will help alleviate the traffic on the single hunter creek trail. That way hikers, dogs, birdwatchers, runners and bikers alike can have a more peaceful experience, without having to get off the trail for each other, or be on a trail with high traffic because it is the only option.	6/13/2013 7:04 PM
57	Mt. Bike, horse, ped	6/13/2013 7:02 PM
58	hiking, running, mountain biking	6/13/2013 6:54 PM
59	yes- mountain biking	6/13/2013 6:27 PM
60	Mountain biking and hiking	6/13/2013 6:18 PM
61	mountain biking. NO DOGS!	6/13/2013 5:53 PM
62	Yes!	6/13/2013 5:50 PM
63	hike and bike	6/13/2013 5:41 PM
64	Yes it should be built for hikers, bikers and maybe a separate trail for horses	6/13/2013 5:28 PM
65	Yes. It should be open to mt biking.	6/13/2013 5:20 PM
66	yes, mountain biking	6/13/2013 5:16 PM
67	Mountain Bikes	6/13/2013 5:02 PM
68	Absolutely. Mountain Biking.	6/13/2013 4:56 PM

Lindsay Public Survey

69	Hiking, mountain biking.	6/13/2013 4:42 PM
70	Mountain Bikes, Hikers	6/13/2013 4:39 PM
71	Yes! for Mtn bikes, and hikers/runners	6/13/2013 4:34 PM
72	It should be made for all types of non-motorized uses	6/13/2013 4:26 PM
73	Yes, Biking and hiking	6/13/2013 4:19 PM
74	Mountain Bike, Foot, Horseback.	6/13/2013 4:19 PM
75	yes and for mtb, hike, trail running....	6/13/2013 4:18 PM
76	trail running, mountain biking, hiking, walking, dog walking, hut trips	6/13/2013 4:17 PM
77	Yes- for bikes and hikers	6/13/2013 4:13 PM
78	bikers hikers, no horses	6/13/2013 4:12 PM
79	Foot and bike.	6/13/2013 4:06 PM
80	YES!!! Mountain biking	6/13/2013 4:01 PM
81	non-motorized, but allow bikes, dogs and hikers	6/13/2013 3:54 PM
82	MTB	6/13/2013 3:51 PM
83	yes!!!! mountain biking and hiking only	6/13/2013 3:45 PM
84	YES! Biking and foot traffic	6/13/2013 3:44 PM
85	Yes. For bikers and hikers.	6/13/2013 3:37 PM
86	Yes, multi-use (hikers/runners/walkers/bikers).	6/13/2013 3:36 PM
87	mountain biking	6/13/2013 3:27 PM
88	Hiking, biking, skiing, snowshoeing	6/13/2013 3:27 PM
89	Mountain Biking and hiking	6/13/2013 3:23 PM
90	Mt biking & hiking trails	6/13/2013 3:22 PM
91	Yes, hikers and bikers	6/13/2013 3:19 PM
92	Hiking, walking, mountain biking, dogs on leash, cross country skiing	6/13/2013 3:19 PM
93	Yes. Absolutely. It would be a great link for mountain biking	6/13/2013 3:18 PM
94	Mountain biking.	6/13/2013 3:17 PM
95	This connection should definitely be made and opened to mountain bikers and skiers.	6/13/2013 3:16 PM
96	Absolutely yes, for hiking and biking.	6/13/2013 3:15 PM
97	This trail should be built, and for the purpose of mountain biking. Mountain biking trails also make for excellent hiking. The inverse is not always true.	6/13/2013 3:12 PM
98	Yes I do. Mountain bike and foot access.,	6/13/2013 3:06 PM
99	Biking, hiking	6/13/2013 3:01 PM
100	yes	6/13/2013 2:58 PM
101	Yes. Hiking and mountain biking	6/13/2013 2:50 PM
102	I do indeed feel this connection should be made to include Mtn Bike access.	6/13/2013 2:49 PM
103	yes. Absolutely. Mtn bikes.	6/13/2013 2:47 PM
104	mtn biking & hiking	6/13/2013 2:45 PM
105	Hiking/mountain biking	6/13/2013 2:36 PM
106	Absolutely	6/13/2013 2:33 PM
107	YES! For bikers...hikers can continue to use hunter creek trail which will further mitigate confrontation between the various user groups.	6/13/2013 2:25 PM
108	I definitely feel this connection should be made for biking / hiking. This would provide a great addition to the trail system in place so close to Aspen.	6/13/2013 2:24 PM
109	Yes, for mountain bikes and hikers	6/13/2013 2:21 PM
110	Yes- hike bike horse	6/13/2013 2:00 PM

Lindsay Public Survey

111	Yes, absolutely . I believe that building this trail would speak to the Roaring Fork Valley's commitment to encouraging outdoor recreation by cyclists, hikers, runners, walkers, and wildlife watchers.	6/13/2013 1:59 PM
112	dog walking hiking, biking	6/13/2013 1:49 PM
113	yes, it would please me to see anyone/thing that would like to use the new trailing using the new trail.	6/13/2013 1:41 PM
114	I believe this connection should be made for walkers, hikers and mt bikers.	6/13/2013 1:35 PM
115	Bikers and hikers	6/13/2013 1:33 PM
116	Mt biking	6/13/2013 1:17 PM
117	A novice bike trail!	6/13/2013 1:05 PM
118	Absolutely . Mountain biking and hiking	6/13/2013 12:58 PM
119	Yes this is a great idea!!	6/13/2013 12:57 PM
120	I do believe this connection should be made. It could be used by hikers, runners, and bikers. It would move much of the mountain biking traffic off Smuggler Rd and Red Hill improving access for everyone.	6/13/2013 12:57 PM
121	yes and for hiking biking and hunting	6/13/2013 12:55 PM
122	Yes, build a mtn bike trail to connect to town.	6/13/2013 12:52 PM
123	A mountain bike trail linking town to the Hunter Creek trail system seems like the obvious choice. It would improve safety, access, and the overall experience of the trail system. The trail could be multi use and would provide hikers and runners with an alternative from the monotonous Smuggler Rd and the rocky Hunter Creek trail, both of which act as a bottle neck for people accessing the amazing backcounty Aspen has to offer.	6/13/2013 12:50 PM
124	YES. Mtn bikes, hiking	6/13/2013 12:44 PM
125	I strongly suport the building of this trail connection and the wishes of the previous owner. Mtn biking	6/13/2013 10:06 AM
126	bikes and runners	6/11/2013 10:21 PM
127	yes, mtn. biking, hiking, dog walking	6/11/2013 9:27 PM
128	Mountain biking seems like the obvious use. The climb up Smugglers and the road descent really detract from the experience of riding the world class trails in the Hunter Valley . Linking those from town would great improve the experience and safety for all.	6/11/2013 7:28 PM
129	Yes. Hiking, biking, skiing	6/11/2013 5:26 PM
130	Hikers, Bikers, Runners.	6/11/2013 5:14 PM
131	would need to see location	6/11/2013 2:26 PM
132	Mountain biking, hiking, trail running	6/6/2013 11:02 AM
133	If the trail connection can be made in a way that minimizes fragmentation of wildlife habitat I would like to see hiking and biking allowed.	6/6/2013 10:39 AM
134	Yes, for mountian bikes, hikers, equestrian	6/6/2013 8:15 AM
135	no trail connection	6/5/2013 6:06 PM
136	See #7 above	6/4/2013 6:57 AM
137	Yes the connection should be made. It should be looked into whether the connection should be just hikers, or mtn bikers too. Adding a mtn bike option to get down to the bottom of Red Mtn. Rd would be great. There is a ton of hiker traffic only on that lower portion of Hunter Crk trail, so safely connecting that would be important to consider. With the new connection of Hunter Crk Trail to the Rio Grande trail, it would seem appropriate to add a mtn bike connection between the hunter crk trail head and Mallory trail (or something else for mtn bikes on smuggler)	6/3/2013 9:50 AM
138	yes! mountain biking	5/30/2013 8:46 AM
139	Pedestrians	5/28/2013 11:49 AM
140	Good to know.	5/24/2013 6:08 PM
141	Yes, Yes Yes, It should be for mtn bikers and hikers.	5/24/2013 8:42 AM
142	Yes, absolutely . This is the holy grail trail alignment that will complete the Hunter Creek mountain biking experience by replacing the current paved descent with a quality dirt trail descent. The grade of the trail should be made as shallow as possible, allowing for uphill travel by cyclists, and a more enjoyable and sustainable descent. Trail should be open to foot and bike traffic.	5/24/2013 8:13 AM
143	mtn bike	5/23/2013 10:07 PM
144	nuetral	5/22/2013 3:00 PM

Q9 Please provide any additional Thoughts or feedback about the Lindsay Parcel.

Answered: 68 Skipped: 76

#	Responses	Date
1	Please manage for human recreation, but NO DOGS since the dog situation is out of hand and dangerous to bicycle riders and walkers.	6/19/2013 7:21 AM
2	Bike trails that are buffed out	6/17/2013 6:10 PM
3	This would be a great addition to access Hunter Creek and lessen impact on the heavy foot traffic on Smuggler Road.	6/17/2013 3:44 PM
4	Thanks for asking and for helping make meaningful trail connections.	6/17/2013 12:04 PM
5	This is a great opportunity for the outdoor community. Thank you for your consideration.	6/15/2013 9:07 PM
6	That would be an awesome addition to the great Hunter Creek Trail System!	6/15/2013 6:34 PM
7	Sounds like a great place to put a new mtn bike route into Hunter Creek.	6/15/2013 5:53 PM
8	The Lindsay Parcel is a critical link that, if managed thoughtfully, could dramatically enhance the outdoor experiences and opportunities of the people recreating in Hunter Creek and on Smuggler. I would never suggest that we exploit our open spaces, but I do believe that they can be managed for the enjoyment of everyone while still being respectful of their sustainability. Al Byer, who I know only by the trails that he had designed and built, seems to understand this balance and, as a result, has produced some of the best mountain biking trails in this general area. If given the opportunity, I feel confident that he could turn the Lindsay Parcel into something special.	6/14/2013 3:41 PM
9	For the benefit of locals and tourist alike, this is a great opportunity for the City and County to enhance the use of Hunter Creek Trail and Smuggler Mt Road areas which are presently over crowded. Other resort communities have actively built trail systems close to town to draw visitors and to improve the experience for locals. It would be smart of Aspen to get up to speed and address long term planning for the advantage of all.	6/14/2013 12:56 PM
10	Having an option other than the Smuggler rd for access to Hunter Creek would be a great asset for the City. Both the recreational (bike/hike) and educational (ACES tours?) value would be high.	6/14/2013 8:54 AM
11	A map here on this survey depicting the parcel and potential trail would be helpful.	6/14/2013 7:17 AM
12	Excited to see the possibility of this being open for recreational use!	6/14/2013 7:00 AM
13	Great buy, now lets use it.	6/14/2013 6:27 AM
14	Better enforcement of leash and cleanup regs for dogs.	6/14/2013 6:20 AM
15	The addition of the Lindsay Parcel allows for a beautiful non-motorized connection to the Hunter Creek Valley that offers a relatively easier gradient to gain access by.	6/13/2013 11:41 PM
16	A way down on a mountain bike from Hunter Creek besides Red Mountain road is really needed!	6/13/2013 10:46 PM
17	Good Job, Al	6/13/2013 10:35 PM
18	As noted above, the potential for this area to enhance the use of the Hunter Creek valley is wonderful. Areas close to town should be leveraged to provide recreational opportunities to the community and its visitors. The Lindsay Parcel certainly provides this opportunity.	6/13/2013 10:13 PM
19	Make one trail an ascending bike trail, and another a descending trail.	6/13/2013 9:43 PM
20	Please build the trails this summer 2013, more mountain bike trails!	6/13/2013 9:35 PM
21	This is a great purchase. Hats off to those involved in its acquisition. With this piece of land, the prospect of a mountain bike connection into town can become real!	6/13/2013 9:30 PM
22	It is only a matter of time before someone gets seriously injured or even dies coming down Red Mountain Road. For a town that claims to be so active and provides such amazing recreation activities, it seems ridiculous that bikers descend down a paved road with blind corners and fast cars.	6/13/2013 7:04 PM
23	This is an incredible opportunity that could provide a much enhanced access to and from town.	6/13/2013 6:54 PM
24	NO DOGS!	6/13/2013 5:53 PM
25	A different access to hunter ck is overdo. We need cyclists off smuggler rd.	6/13/2013 5:50 PM
26	Thanks!	6/13/2013 5:28 PM
27	Thank you for working on this project. I really appreciate your work and dedication. These trails are important connectors and will make The Hunter Creek Trail network incomparable!	6/13/2013 5:20 PM

Lindsay Public Survey

28	Great link to town on a mountain bike and wouldn't require riding red mtn road on bikes which is dangerous. Thanks! Chris Klug	6/13/2013 5:16 PM
29	I'm assuming the Lindsay Parcel is the same one referenced in Q #7. It would be great to have a separation of uses so that hikers are not "bothered" by bikers and bikers are not endangered by hiker's unleashed dogs.	6/13/2013 4:56 PM
30	Please make trail flow nice and not super steep switch backs...	6/13/2013 4:18 PM
31	Might help with biking if it's a one-way trail. Also - it's not that effective to only allow people to select one activity that they perform on Smuggler - many people do all of these things!	6/13/2013 4:13 PM
32	get the trail done as soon as possible.	6/13/2013 4:12 PM
33	I run up in Hunter Creek 3+ times per week in summer. Smuggler is a terrible way to access the Hunter Creek Valley. The current Hunter Creek trail is pretty, but I've hurt myself navigating the rocky terrain several times through the years. And for bikers it isn't a consideration. A new runnable/ridable route is needed to get up and run and ride the beautiful trails up there. Thank you.	6/13/2013 4:06 PM
34	More singletrack!! We are surrounded by National Forest in Aspen so I don't think a few more trails would be bad.	6/13/2013 4:01 PM
35	I think this is something all Aspenites have been waiting for. This will help the flow of our trail systems and allow us to be shaded when climbing up to those trails.	6/13/2013 3:45 PM
36	I look forward to improved trails accessing Smuggler and Hunter Creek with the ability to "loop" via Mt bike without going on pavement.	6/13/2013 3:22 PM
37	Great new connection. Please build it soon as this will be a better way to access hunter creek and there will be no boulders to have to climb over.	6/13/2013 3:19 PM
38	Pitkin County continues to be a good partner to the non-motorized trail community and I believe they have an opportunity to use this parcel as a second gateway to the Smuggler Open Space existing parcel and trails and the USFS property beyond. This parcel acquisition opens up Smuggler in a new way that will add to its recreational value and decrease the pressure on the current access and egress on Smuggler Mountain Road. Hats of to the city, county and Open Space staff and committee for working towards a new future on Smuggler.	6/13/2013 3:19 PM
39	Connecting these trails and allowing mountain bike access would make the Smuggler area safer and much more fun. Win-win!	6/13/2013 3:16 PM
40	Sure is great having that open space, nice work!	6/13/2013 3:15 PM
41	This is a great addition. Thank you for considering this awesome trail connection.	6/13/2013 3:12 PM
42	No motorized access please.	6/13/2013 3:06 PM
43	Oooooommm.	6/13/2013 2:58 PM
44	This would be the perfect missing trail piece for mountain bikers.	6/13/2013 2:50 PM
45	This is a great opportunity to improve an already wonderful trail experience.	6/13/2013 2:49 PM
46	Turn Al Beyer. He is responsible and knows what he is doing.	6/13/2013 2:47 PM
47	If it provides access to the Hunter Creek Valley, it would be great mountain biking/hiking.	6/13/2013 2:36 PM
48	This special connection is a no brainer. Get er done!	6/13/2013 2:33 PM
49	Great work. Thank you!	6/13/2013 2:25 PM
50	I have thought about how great a single track in this location would be for many years, and am very excited about the prospect of it happening.	6/13/2013 2:24 PM
51	The needs of the community need to be put ahead of the tourist resort needs. Keep this physically demanding that the visitors all are channeled to the smuggler road and not to this new trail	6/13/2013 1:49 PM
52	Acquiring the Lindsey parcel was a great step to further link trail in this open space so close to Aspen.	6/13/2013 1:35 PM
53	Please move the project forward quickly	6/13/2013 1:17 PM
54	Please make a trail!	6/13/2013 12:58 PM
55	I have walked a proposed path for the trail and it feels like the right grade and treed for riding. Not only would it be a great link but by itself it would be a beautiful trail.	6/13/2013 12:57 PM
56	Aspen has great potential for trails and mountain biking up in the hills but surprisingly bad access from town. This link add so much to the current trail system, probably more so than any other single trail.	6/13/2013 12:50 PM
57	based on my desire for multiples uses I'd like to end up with two trails, one for mtn. biking and one for hiking that allows dogs (but not necessarily off leash)	6/11/2013 9:27 PM
58	If there are any trials to build in the area this one seems like the one.	6/11/2013 7:28 PM
59	This was a fine, forward thinking purchase to insure plenty of preserved backcountry appreciation opportunities.	6/11/2013 5:26 PM

Lindsay Public Survey

60	Smuggler is too busy and too much traffic for Horses. It would be extremely unsafe for their use, but it could be open to them at their own risk	6/11/2013 5:14 PM
61	thanks for open space!!	6/11/2013 2:26 PM
62	This offers a connection from the Rio Grande Trail to the Smuggler-Hunter Creek area. It would be a fantastic improvement. Nice work in getting the property .	6/6/2013 11:02 AM
63	More trails means more tourism and improved lifestyle for locals.	6/6/2013 8:15 AM
64	Thanks for doing this. Call if you like. Todd Shaver 544.1707	6/4/2013 6:57 AM
65	It's exciting to see this outparcel added to the mix of the overall Smuggler open space!	6/3/2013 9:50 AM
66	It's close to town so makes sense to use for recreation	5/30/2013 8:46 AM
67	Don't know this parcel but go for it to allow multiple uses unless safety issue Connect it ??	5/24/2013 6:08 PM
68	I think that this will be a very successful and popular trail. The generally proposed alignment provides for shade on hot summer days, and it could become a viable uphill access route for the HC/Smuggler trail system. If the route is popular both up and down for cyclists and hikers, the width of the trail should allow room for passing (or provide frequent pull out areas). A wider trail will require more work to create the trail initially, but will be a wise investment in limiting trail user conflicts (on a trail that will be immediately adopted by cyclists descending from HC area). One suggested name for the trail is the Portal Trail, given it's the only realistic bikeable singletrack route of its kind to link the aspen valley floor to the HC/Smuggler areas - it's an access portal surrounded by steep terrain and private property, providing access to federal lands. Thanks for everyone's efforts to make this trail a reality!	5/24/2013 8:13 AM

EXHIBIT C

Results from the Second Phase of Public Survey, October 2013

Question: Please provide feedback and thoughts about the Lindsay Parcel Management Plan.

Responses:

1. *"As someone who has grown up in this valley and running these trails I feel that an alternative route would be a great use of the land and away to foster and support the active community that makes Aspen such a wonderful place to live and the community so vibrant. Let us enjoy the place that we call home!"*
2. *"This trail offers an awesome, practical alternative down Hunter Creek for all lovers of outdoor recreation. Why not add something even more natural and interesting than Smuggler Road to the many walkers, hikers and bikers who enjoy the area?"*
3. *"As someone who grew up in Aspen, hiking and riding bikes all over. I support the new trail plan. Mtn bikers need an alternative trail from the Red Mountain road."*
4. *"I support the new trail concept for foot and mtb to avoid using the red mtn road. What a great spot and a great idea!"*
5. *"Please provide multi-use hiking & biking access to hunter creek. Moto and spandex can stick to Smuggler."*
6. *"I would love to see additional multi-use trails developed in the Lindsay Parcel. The hiking and biking in the Hunter Creek Valley are spectacular. While the access for hikers is good, it is not enjoyable for bikers to ride up the very steep and sunny Smuggler Mtn. road, and descend Red Mountain Road. I have taken to accessing the area from Lenado through Four Corners just to avoid these two areas. I think that making a multi-use trail to access Hunter Creek Valley would be a more enjoyable trail experience for all users, help beginner mountain bikers find a place to ride, and contribute to the "bicycle friendly" culture of Aspen."*
7. *"Aspen prides itself as being a world class resort. This is backed up by the skiing, scenery, and general access to the outdoors. Unfortunately this is not the case for mountain biking. While there are bits and pieces of a great trail system it is haphazard at best. Linking the Hunter Creek trail system to town via single track would be a huge step in the right direction. It would benefit bikers, hikers, runners, and residents on Red Hill, with little to no negative impact. Mountain biking is increasing in popularity all over the country and it would be a shame to miss this opportunity."*

8. *"Think it is a great addition to the current trail system we have. The area sees high use by hikers, bikers, and runners and we should encourage a comprehensive and inclusive trail system around Aspen instead of fragmented alignments. This trail is a huge asset in linking the Smuggler/Hunter Creek area into a more friendly trail system."*

9. *"I am for opening the alternate parcel as it is an obvious and beautiful access for bikers (and really the only one) but also would provide a great trail for those who wish to get away from the pavement. Thanks!"*

10. *"My years of avid mountain biking have come and gone but I still enjoy the sport and get out 10-15 days a year. I have always thought it a shame that after such a grueling uphill on smuggler only a few downhill single tracks were rewarded before I had to get on a paved road for the majority of my descent. I think it would be wonderful for the community at large if we had a trail that could be used for mountain bikers and hikers alike connecting the incredible hunter creek valley with the best town in the world. It makes perfect sense. I could also see it slowing traffic up into the hunter creek valley and also easing the traffic on smuggler. I for one have driven up to hunter creek many times to begin my bike rides, just so I could avoid the paved section. I am excited to hear the possibilities of this trail and would love to see it move forward in a positive direction for the locals of the valley. We live here because we love it here, and this would only help us enjoy it more."*

11. *"I hope that the city decides to create a trail so that runners, hikers, and mountain bikers don't have to ride down Red Mountain -- that is so dangerous!!"*

12. *"I grew up riding the smuggler/hunter creek loop, and would love to see an extension that bypasses the red mountain paved section. It would be a huge boon to the local hiking/biking area."*

13. *"As an Aspen resident and avid mountain biker, I probably ride the Hunter Creek area 3 to 4 times a week. A dirt trail would not only improve the enjoyment of the ride for bikers: it would improve the overall quality and value of the trail system, a positive reflection on our town. Most importantly, it keeps cyclists off of the road, making it safer for both cyclist and motorist. Build the trail."*

14. *"Seems like it would be great to have easier and closer access to the hunter creek system both for hikers and riders. Having grown up in town, I value getting more folks into the hills and enjoying the healthy life style I was raised on."*

15. *"I would like to see a trail or trails go through the Lindsay parcel connecting hunter creek valley to downtown Aspen."*

16. *"Aspen has great trails, the problem is getting to them. The Smuggler road may be fine for walking a dog but it is not the ideal entry system to a great trail network. Buttermilk is seeing far more traffic these days because the entry point does not have*

the 10% grade that Smuggler offers. A portal trail from the base of Smuggler to Hunter Creek would welcome hikers and bikers to explore the trails beyond. Aspen is World Class. We should provide our citizens and guests with a trail that provides meandering access across Smuggler Mountain rather than an old mining road that was designed to get machines up the mountain."

17. *"I very much support the construction of a new multi-use trail that would connect the Lani White Trail to the Hunter Creek Valley. As a 26 year-old, 4th generation Aspenite, stepping out my back door to hike, bike, ski, and kayak was the most integral part of my time growing up in our community. I can confidently say that I speak for many in my generation of kids that grew up in this town and the RFV that this trail would be a great thing for our mountain town full of people that like to get outside and enjoy our beautiful spaces. Thanks."*

18. *"The Portal trail is a much needed addition to the Aspen trail network. It would provide great hiking and running loop options as well as providing mountain bikers a much more enjoyable and safer descent from the hunter creek valley."*

19. *"I think that a mixed use trail designed for biking and foot traffic would be an extremely beneficial use of the Lindsay Parcel."*

20. *"Please provide a trail on the parcel. Thank you."*

21. *"I would like to see more public land remain as is. I am a multi-use user of that area, but I do not feel that the continued development of new trails enhances the experience of mountain biking or hiking in the area. I feel that it is more important to ensure that you get the feeling of being in a Forrest, or that you see wildlife. In recent years it seems like we have added quite a few trails in the hunter creek/smuggler area (in the whole valley really). At what point is it enough? Is the goal to have a world class mountain biking trail system?"*

22. *"Dear Pitkin County Open Space and Trails,
I am writing to you to express my support for the proposed alignment in the Lindsay Parcel. I grew up in Aspen and moved back 3 years ago after graduating from college in 2007 and working in Wyoming for a few years. Throughout college and post-college, I lived in some really incredible places such as Jackson Hole, Boulder, Costa Rica, Bozeman and Vermont. I could have settled in any of these locations, yet compared to Aspen, none of these places ever truly felt like home. I believe that this feeling is rooted in the outdoor opportunities and natural beauty that the immediate surroundings of Aspen have to offer. My entire life, Hunter Creek has been the embodiment of my backyard, my playground, and my spiritual place. I respect and cherish the peaceful, gorgeous trails, forests, and wildlife that it has to offer. As a runner, hiker, and biker, I have spent many, many days exploring these woods alone and with friends. We have an opportunity with the Lindsay parcel that should absolutely not be passed up. With its understandable popularity, the bottom of the Hunter Creek Valley is already a well-used area at all times of day. The proposed alternate trail will help to relieve some*

of the traffic within the Hunter Creek corridor. Because of the close proximity to the current trail, and thoroughly analyzed route finding, I do not feel that a new trail will have any negative impact on the landscape or wildlife within the corridor. As a runner and a hiker, I often find myself heading up or down Smuggler in order to complete a loop of the Hunter Creek Valley. I love the leafy, rooted, muddy trails of the Iowa Shaft and Hunter Creek Valley, but eventually I intersect with Smuggler where I am almost guaranteed to see people on their cell phones trying to get a quick hit of exercise. I am grateful for Smuggler and what it offers in terms of both access and a place for people to workout outside, but if the Lindsay parcel offered an alternative trail to head up and/or down Hunter Creek, you bet I would take that trail instead, in order to enjoy and take in the a true woodland trail, rather than an exposed dirt road.

I also believe that the Lindsay Parcel should provide an alternative route for reasons of safety. Bikers are inevitably going to ride the trail system within the Hunter Creek valley and surrounding hillsides. There is no way around that, nor is there any reason to stop them from doing so (as a pedestrian, every biker that I encounter is friendly, slows down, and is conscientious that the trail needs to be shared -- as a biker myself, I am very aware of this responsibility, and make all efforts to respect the pedestrians that I encounter). As of now, the only practical bike exit out of the Hunter Creek corridor is to enter onto Red Mountain road and descend into town on the pavement. This is scary! I have seen fathers taking their ten year old kids on mountain bike rides that have to make this paved final descent. This means that bikers of all ages and abilities are riding down a steep grade, encountering oncoming traffic, and are moving fast around blind corners. It is only a matter of time until someone gets seriously injured – do we really need to wait for that wake up call before we make a change? I knew Verena, I knew Fritz and Fabi, and I know the real community of Aspen. Providing a place for the people to descend Hunter Creek on both foot and bike will be a positive contribution to our town, and I think that Verena and Fritz would certainly agree. This opportunity is an excellent and obvious next step in creating a healthy management plan for Aspen's trail system. If the City and County ultimately do not follow through with this possibility, I will be extremely disappointed in my local government and my community. For those of us who still have true mountain town values: we are an active, amazing community, NOT a shopping district with backwards priorities. So please, let's make this opportunity a reality and keep developing Aspen in a healthy way! Thank you for your consideration,"

23. *"Although now an Aspen-Snow mass expat living downvalley, I still love to journey upvalley to ride the Smuggler-Hunter Creek-Four Corners trail system and have enjoyed the improvements over the years. The next increments are very exciting, including a Hunter Creek system access from town through the Lindsay parcel, hooking up with the existing public "Verena Mallory Trail" which goes across a piece of the Lindsay Parcel so AVLT (holders of the deed for Verena Mallory Park) should not be able to obstruct public access to lands deeded for public use including non-motorized bicycles nor use their position to the art a beneficial public plan which Fritz Benedict would have heartily endorsed. The plan should include measures to fulfill the promise of a memorial bench to honor Walter Sarad which was part of the original contract negotiations, from what I*

understand. In general, the access would take pressure of Smuggler Road for bikers, hikers, trail runners and others. For bikers, it means not having to do the Red Mountain Road descent, which although fun, does pose a danger to cyclists and motorists."

24. *"As a Dog Walker, and Hiker I would love to see another access point into Hunter Creek from the smuggler side. What a great idea."*

25. *"The plan seems to take into account most questions about the use of the land. A multi-use trail with connection to the Upper Hunter Creek Trail or Verena Mallory Trail would make mountain biking in the area much more enjoyable. Also, avoiding Red Mountain Road would increase safety for the large number of bikes coming from the Hunter Valley. I use Smuggler Mountain Road and the Hunter Valley trail system for biking and hiking."*

26. *"As a frequent user of the Smuggler/Hunter Cr loop, I strongly support an alternative trail that could be used by mountain bikers and runners. Thank you."*

27. *"My biggest concern is the amount of terrain that will be disturbed to comfortably accommodate mountain bikes, especially because of the steepness of much of the terrain. Wondering if it could make more sense to establish another route up the Smuggler road to accommodate mountain bikes since that area is already developed to such a great extent. Thank you."*

28. *"Pretty pathetic survey, also hard to find on the website. Why don't you ask some actual questions. On that note please build the trail."*

29. *"I support the development of a trail appropriate for mountain bike and hiking use to provide an alternate route to and from the Hunter Creek area. An alternate trail will decrease traffic and potential safety issues on Smuggler Road while providing for an improved recreational experience opportunity. I also encourage the development of a trail alternative to the Smuggler Road further to the east, below the Meadow."*